

New carrier insight reports: Empowering shippers with data-driven trucking carrier selection

Shippers and first-party cargo clients often face multiple challenges when directly selecting their trucking providers, including safety concerns, regulatory compliance, and potential liability for cargo damage or accidents.

Further, shippers are legally required — under several regulatory frameworks and legal precedents — to exercise due diligence in selecting safe carriers.

To help address these challenges, Marsh and Oliver Wyman developed a quarterly shipper report based on data from BrokerSafe, a cutting-edge freight broker scoring tool, that can help you generate customized risk reports based on real-time data analytics for the truckers you select. These insights allow shippers like you to make informed decisions when choosing your trucking partners.

Marsh's proprietary platform provides comprehensive risk intelligence that can benefit shippers, insurers, freight brokers, and freight forwarders alike. By offering customized risk reports for direct trucker selection, our carrier insight reports are created with the goal of empowering shippers like you to make safer, more cost-effective choices that may reduce liability exposure and optimize supply chain performance.



Key benefits for shippers

By providing data-driven visibility into the potential risks posed by your trucking providers, Marsh carrier insight reports can help you reduce your cargo risk. Our Carrier Insight Report Benefits include:

Enhanced carrier assessment

- Gain access to tailored risk insights based on your carrier list
- Identify high-risk carriers with a history of safety violations or poor performance

Cargo protection and liability mitigation

- Potential to reduce exposure to cargo damage risks by selecting carriers with proven safety records
- Assist with insurance and regulatory requirements

Supply chain resilience and cost optimization

- Possibility to reduce disruptions by partnering with trucking carriers with records of reliability
- Potential to lower unexpected costs associated with liability claims or delayed shipments
- Potentially decrease your shipper cargo insurance costs

Data-driven performance tracking

- Continuously monitor trucking partners for changing risk profiles
- Establish long-term relationships with trusted trucking carriers based on historical performance data

*Stop guessing and start screening.
Better protect your freight and your bottom line
by accessing your carrier insight report today.*

For more information
on how to subscribe to
Marsh Carrier Insight Reports,
contact your Marsh representative.

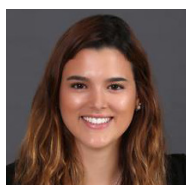


Janelle Griffith

Managing Director,
North American Logistics Leader
Marine, Cargo & Logistics

📞 +1 (347) 468-2623

✉️ janelle.griffith@marsh.com



Rafaela Bustamante

Senior Vice President
Marine, Cargo & Logistics

📞 +1 (415) 412 6827

✉️ rafaela.bustamante@marsh.com



Indira Rigüero

Vice President
Marine, Cargo & Logistics

📞 +1 (213) 479 3416

✉️ Indira.Rigüero@marsh.com



About Marsh

[Marsh](#), a business of [Marsh McLennan](#) (NYSE: MMC), is the world's top insurance broker and risk advisor. Marsh McLennan is a global leader in risk, strategy and people, advising clients in 130 countries across four businesses: [Marsh](#), [Guy Carpenter](#), [Mercer](#) and [Oliver Wyman](#). With annual revenue of \$23 billion and more than 85,000 colleagues, Marsh McLennan helps build the confidence to thrive through the power of perspective. For more information, visit marsh.com, or follow on [LinkedIn](#) and [X](#).

This document and any recommendations, analysis, or advice provided by Marsh (collectively, the "Marsh Analysis") are not intended to be taken as advice regarding any individual situation and should not be relied upon as such. The information contained herein is based on sources we believe reliable, but we make no representation or warranty as to its accuracy. Marsh shall have no obligation to update the Marsh Analysis and shall have no liability to you or any other party arising out of this publication or any matter contained herein. Any statements concerning actuarial, tax, accounting, or legal matters are based solely on our experience as insurance brokers and risk consultants and are not to be relied upon as actuarial, tax, accounting, or legal advice, for which you should consult your own professional advisors. Any modeling, analytics, or projections are subject to inherent uncertainty, and the Marsh Analysis could be materially affected if any underlying assumptions, conditions, information, or factors are inaccurate or incomplete or should change. Marsh makes no representation or warranty concerning the application of policy wording or the financial condition or solvency of insurers or reinsurers. Marsh makes no assurances regarding the availability, cost, or terms of insurance coverage. Although Marsh may provide advice and recommendations, all decisions regarding the amount, type or terms of coverage are the ultimate responsibility of the insurance purchaser, who must decide on the specific coverage that is appropriate to its particular circumstances and financial position.