



Quick Start Guide

For Physical & Virtual Desktops

Released: October 2022
Version: 10.0.5

Disclaimer and Copyright Notice

Process Fusion makes no representations or warranties with respect to the contents or use of this publication. Process Fusion especially disclaims any expressed or implied warranties, merchantability or fitness for any particular purpose. Process Fusion reserves the right to make any changes in specifications and other information contained in this publication without prior notice and without obligation to notify any person or entity of such revisions or changes.

© Copyright 1999 - 2022 Process Fusion All rights reserved.

Information in this document is subject to change without notice. Companies, names and data used in examples herein are fictitious unless otherwise noted. Other than printing one copy for personal use, no part of this document may be reproduced or transmitted in any form or by any means, electronic or mechanical, for any purposes, without the expressed written consent of:

Process Fusion
1000-3250 Bloor St. W., East Tower
Toronto, Ontario
Canada M8X 2X9
(905) 363-0118
Toll Free: (866) 488-3188 (North America only)
www.uniprint.net

Intellectual Property Acknowledgements

UniPrint and UniPrint Infinity are registered trademarks of Process Fusion Registration numbers TMA562,455 and TMA857,027 in Canada and filing number 85-663,579 in the United States. Process Fusion products are also registered as United States Patent Numbers 7,064,856, 7,265,867 and 7,602,522.

Microsoft, Windows, Windows 2019/2022, Windows 11, Microsoft Access, Microsoft Word, Remote Desktop Protocol (RDP), ASP.NET and Active Directory are either registered trademarks or trademarks of Microsoft Corporation.

Citrix, MetaFrame, Presentation Server, XenApp, XenDesktop and ICA (Independent Computing Architecture) are registered trademarks or trademarks of Citrix Systems.

Adobe, Acrobat, Reader are registered trademarks of Adobe Systems Inc.

All other trademarks and registered trademarks are the property of their owners.

Table of Contents

Introduction 1

Installation Scenario 1

 Recommended System Requirements 2

 Recommended Installation Procedure 2

STEP 1: Install UniPrint Bridge 2

STEP 2: Install UniPrint Print Server 7

STEP 4: Install UniPrint Infinity Agent on a Physical Desktop or Virtual Desktop Image 9

STEP 5: Install a Test Printer On The UniPrint Print Server 10

STEP 6: Add the Test Printer In A User Session 10

Printing From A Physical Desktop or Virtual Desktop Image 12

Introduction

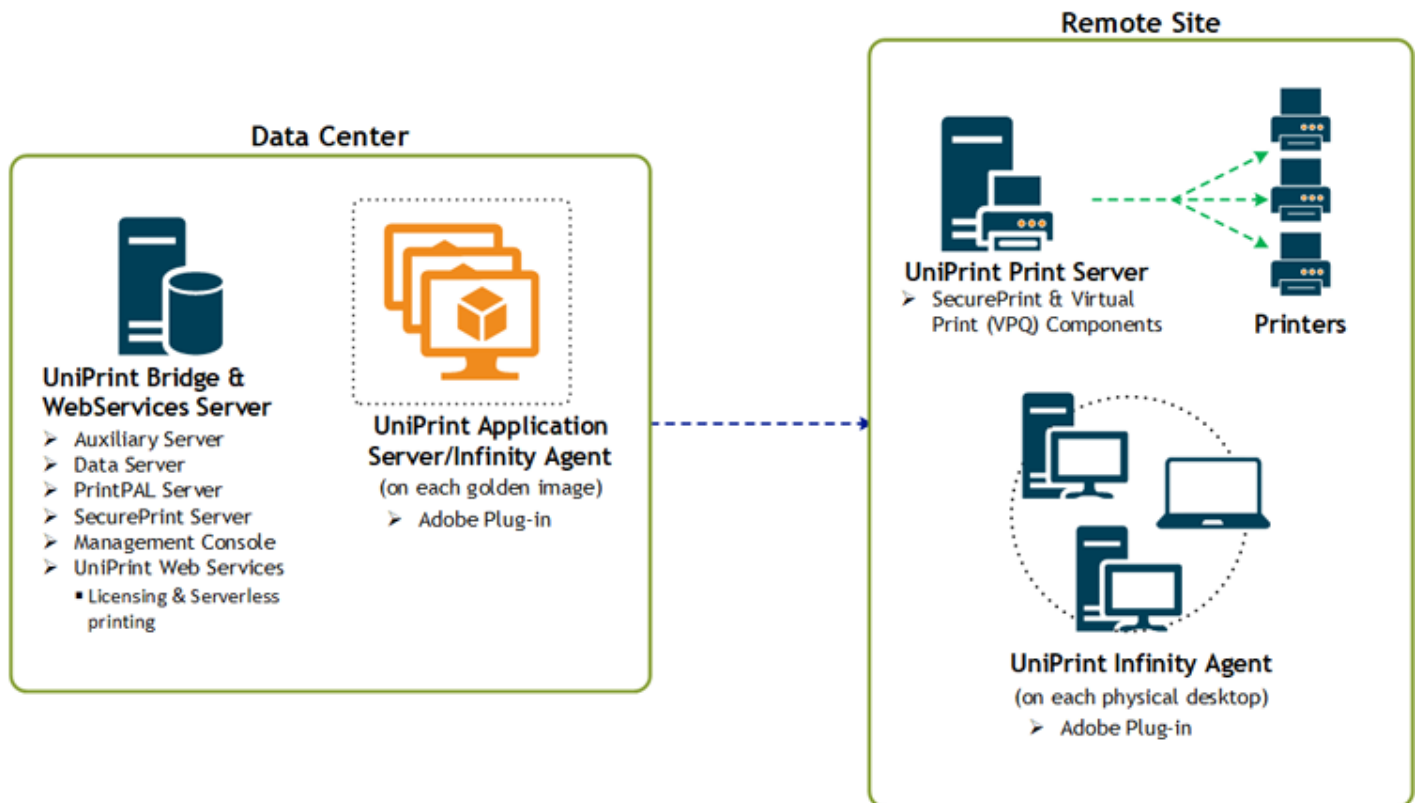
This step-by-step guide is intended for those who want set up UniPrint Infinity with minimal configuration in Physical & Virtual Desktop environments. Only the necessary steps required to start printing from a physical or virtual desktop will be covered. For additional assistance on customizing UniPrint Infinity or setting up many of UniPrint Infinity's features such as SecurePrint, Printer Delegation, Printer Profiles, PrintPAL, Archiving, Statistics Monitoring and Mobile Printing, refer to the [UniPrint Infinity Administrator's Guide](#).



NOTE: To access advanced printer preferences, for example stapling and hole punching, use Printer Profiles. For more information on setting up and using Printer Profiles, refer to the [UniPrint Infinity Administrator's Guide](#).

This quick start guide is specific to physical & virtual desktop environments. All components, with the exception of the aforementioned features, will be installed such that full testing can be performed. However, only instructions on printing from a virtual desktop image will be presented.

Installation Scenario



This scenario requires two servers and either a virtual desktop image or physical desktops. The first server will have UniPrint Bridge with the license server installed. The second server will have UniPrint Print Server installed. The virtual desktop image or physical desktop will have UniPrint Infinity Agent installed. Although the full UniPrint Application Server can be installed on each golden image, for testing purposes, we recommend installing the lighter Infinity Agent.

Recommended System Requirements

Server 1: UniPrint Bridge requires one of the following supported operating systems and all the roles and features listed:

- Microsoft Windows Server 2016
- Microsoft Windows Server 2019
- Microsoft Windows Server 2022

Server 2: UniPrint Print Server requires one of the following supported operating systems and all the roles and features listed:

- Microsoft Windows Server 2016
- Microsoft Windows Server 2019
- Microsoft Windows Server 2022

Physical or Virtual Desktop: The UniPrint Infinity Agent requires one of the following supported operating systems:

- Microsoft Windows 10 or later

Recommended Installation Procedure



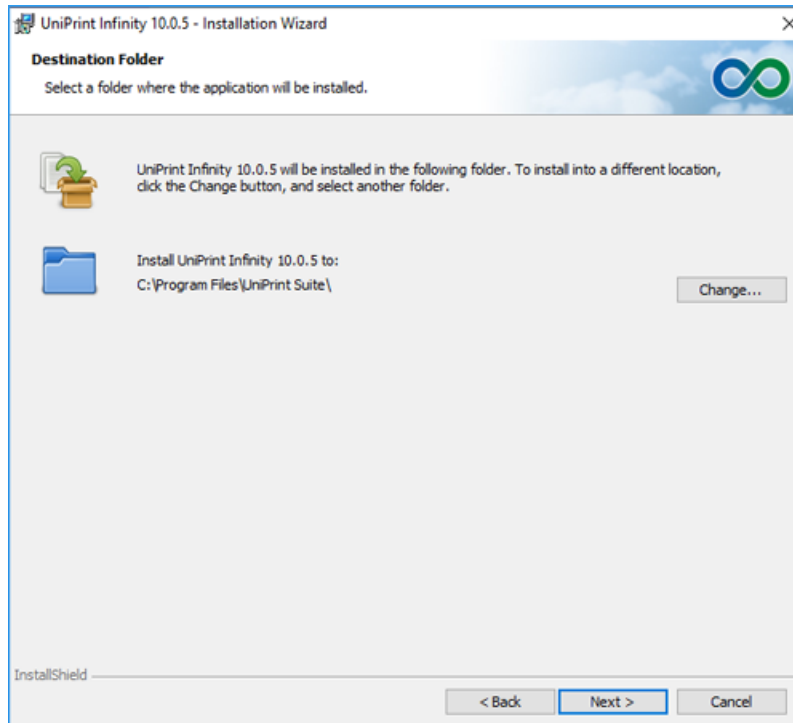
NOTE: The following instructions explain how to deploy UniPrint Infinity in a physical and virtual desktop environment using the minimum number of computers. This installation scenario is designed and intended for testing purposes and does not reflect production best practices.

1. Install UniPrint Bridge and UniPrint Web Services on Server 1.
2. Install UniPrint Print Server on Server 2.
3. Install UniPrint Infinity Agent on either a virtual desktop image or a physical desktop.
4. Install a test printer on the UniPrint Print Server (Server 2).
5. Add the test printer in either the virtual desktop image or physical desktop.

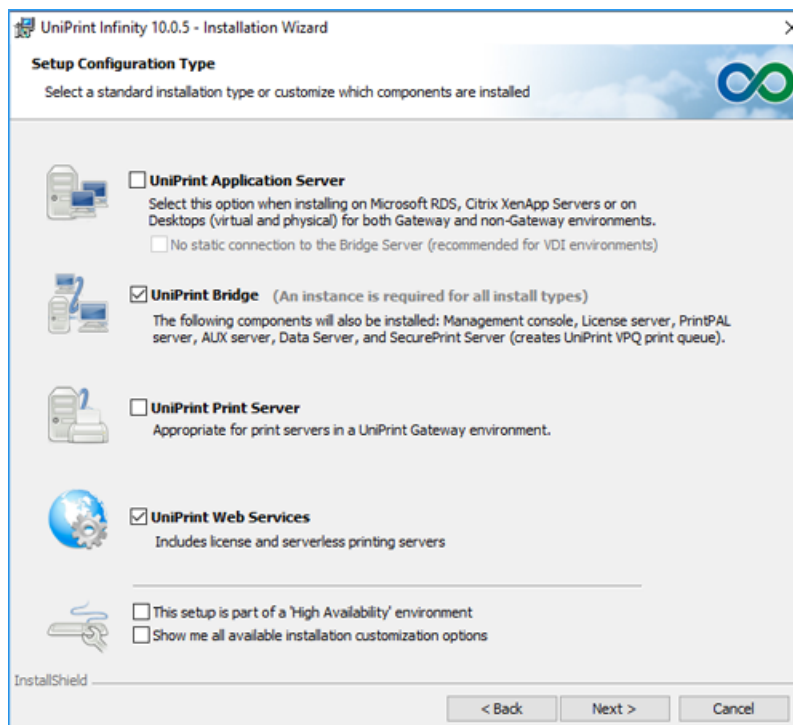
STEP 1: Install UniPrint Bridge

1. On Server 1, run the installation program **UniPrint10_*_Setup.exe** as an administrator.
2. In the **UniPrint Infinity Installation** dialog box, click **Next**.
3. In the **License Agreement** dialog box, click **I accept the terms in the license agreement** and then click **Next**.

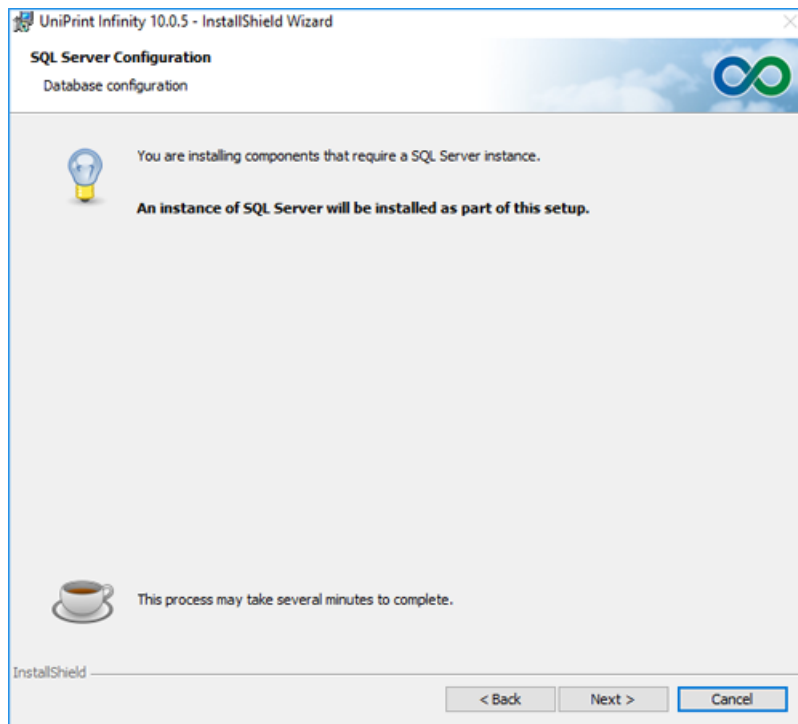
4. In the **Destination Folder** dialog box, click **Next** to accept the default location for the UniPrint program files. Click **Change** to select a different location.



5. In the **Setup Configuration Type** dialog box, select **UniPrint Bridge** and then click **Next**. **NOTE:** By default, *UniPrint Web Services* is also installed.

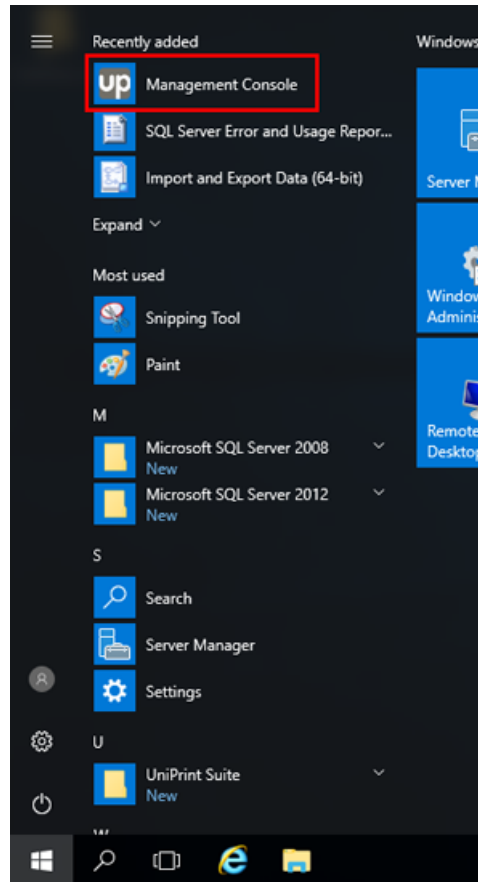


6. Some UniPrint Infinity components, such as the Management Console and SecurePrint, require that SQL Server be installed. Click **Next**.

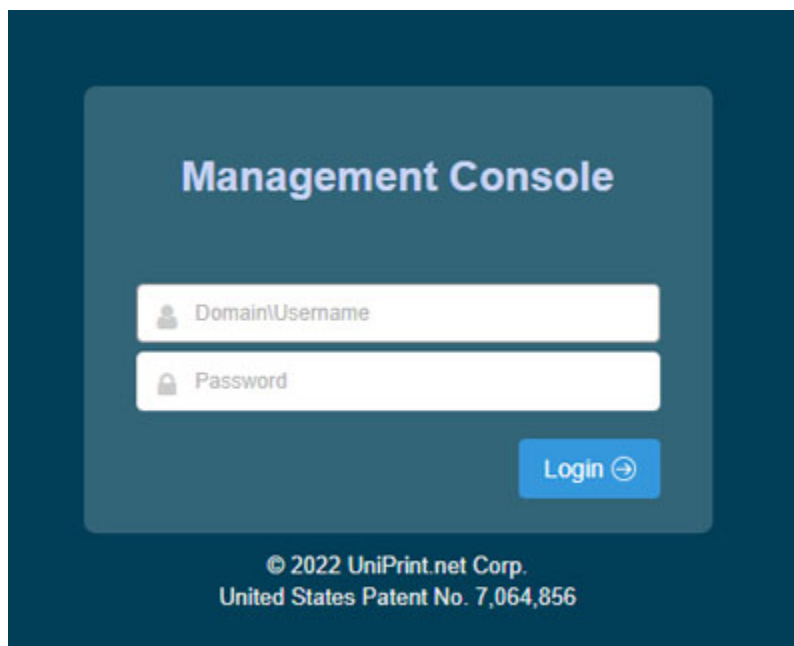


7. In the **Ready to Install the Program** dialog box, click **Install**. The UniPrint installer will copy files to the destination folder.
8. Click **Finish** to complete the installation.

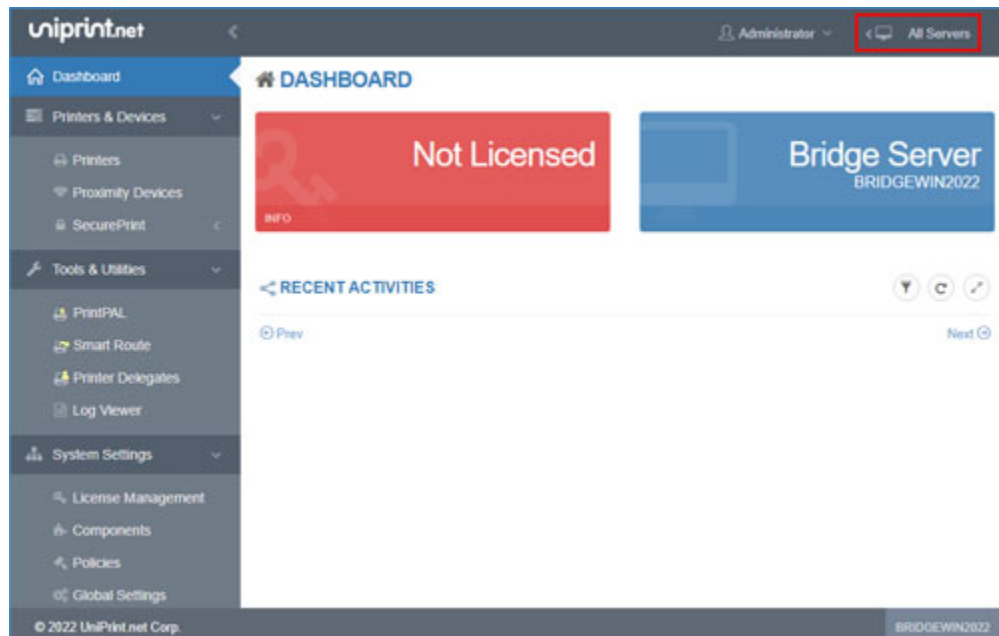
9. Click  and then under **Recently added**, click **Management Console**.



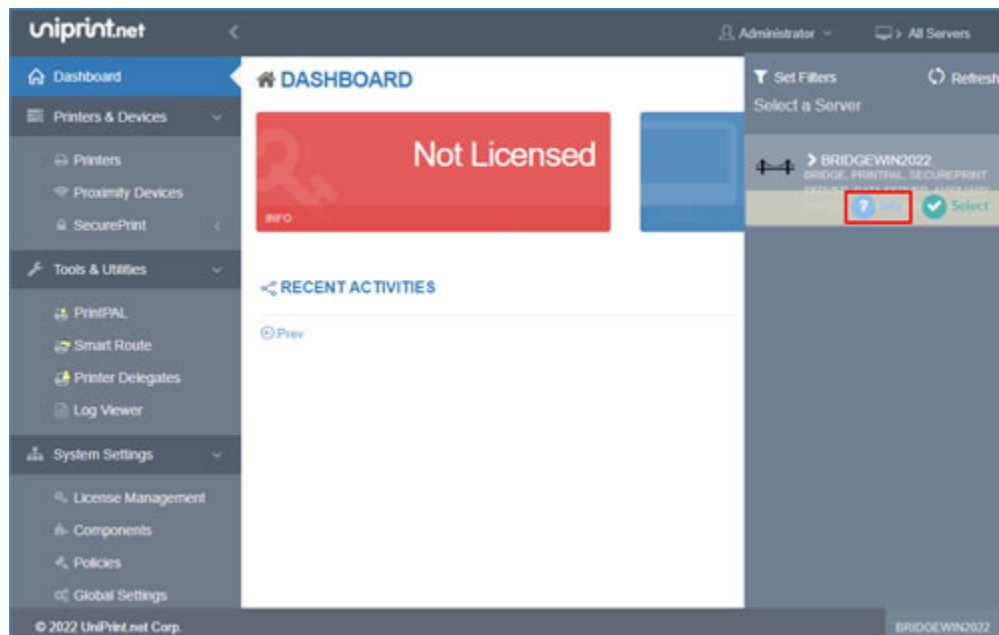
10. Enter administrative domain credentials and then click **Login**.



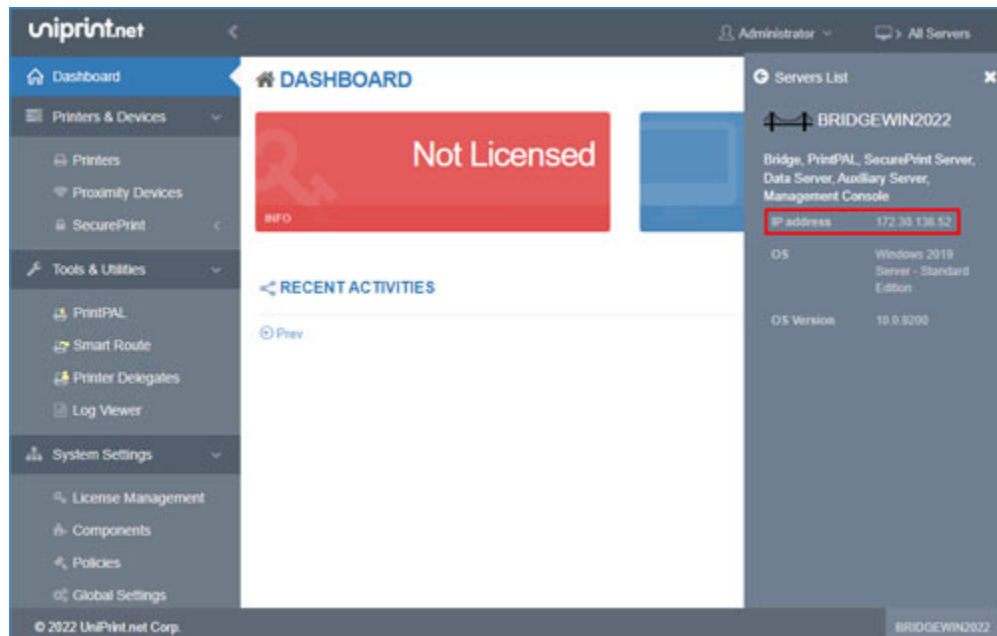
11. At the top of the console, click **All Servers**.



12. Mouse over the UniPrint Bridge and then click **Info**.



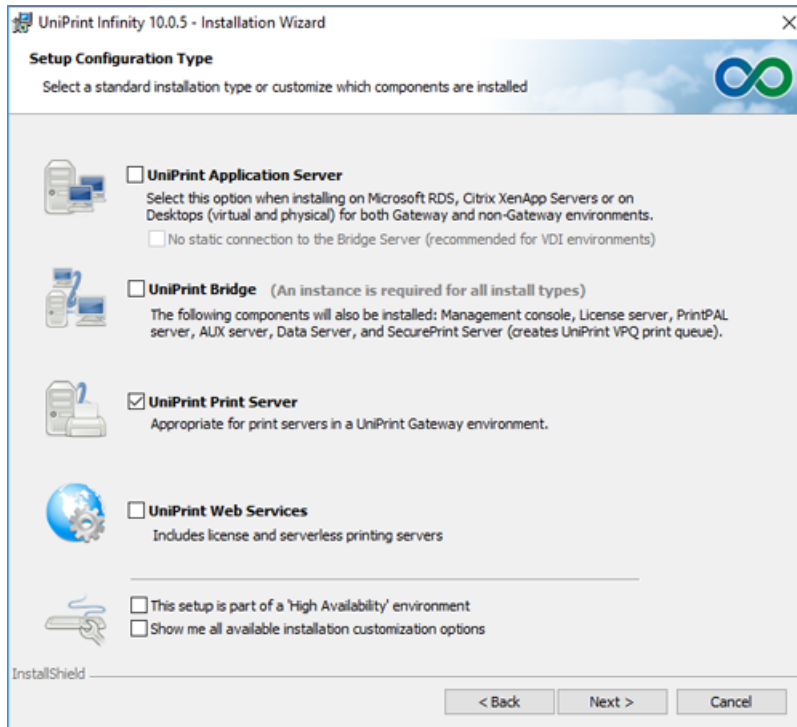
13. Take note of the IP address. This is required when installing the UniPrint Print Server and UniPrint Infinity Agent.



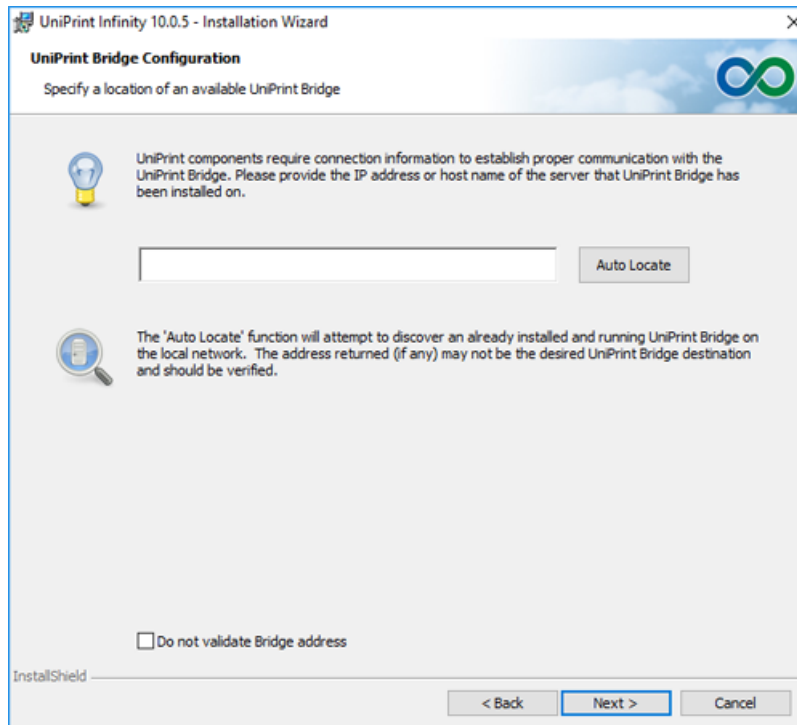
STEP 2: Install UniPrint Print Server

1. On Server 2, run the installation program **UniPrint10_*_Setup.exe** as an administrator.
2. In the **UniPrint Infinity Installation** dialog box, click **Next**.
3. In the **License Agreement** dialog box, click **I accept the terms in the license agreement** and then click **Next**.
4. In the **Destination Folder** dialog box, click **Next** to accept the default location for the UniPrint program files. Click **Change** to select a different location.

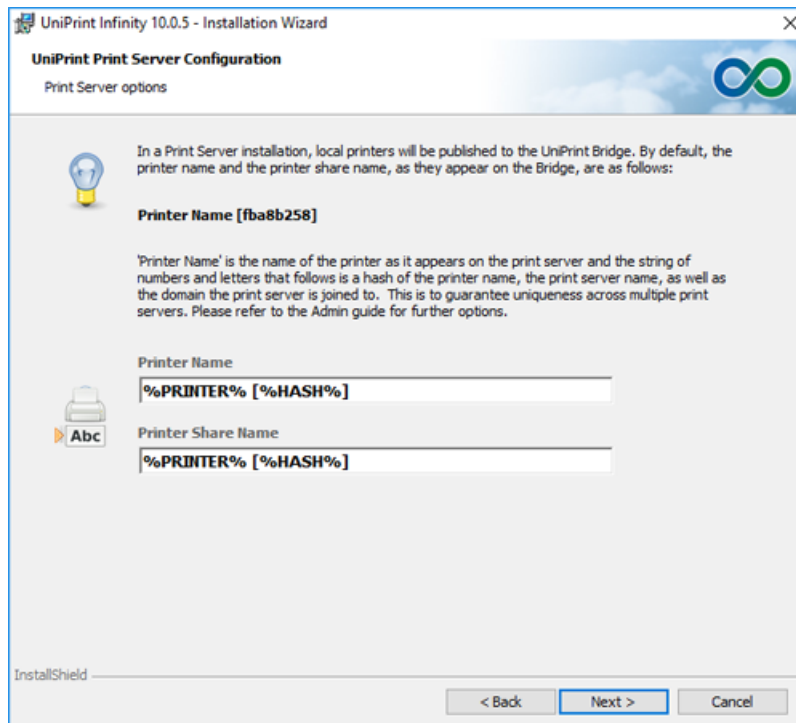
5. In the **Setup Configuration Type** dialog box, select **UniPrint Print Server** and then click **Next**.



6. In the **UniPrint Bridge Configuration** dialog box, enter the **IP Address** of the UniPrint Bridge (License Server) and then click **Next**.



7. In the **UniPrint Print Server Configuration** dialog box, click **Next**.

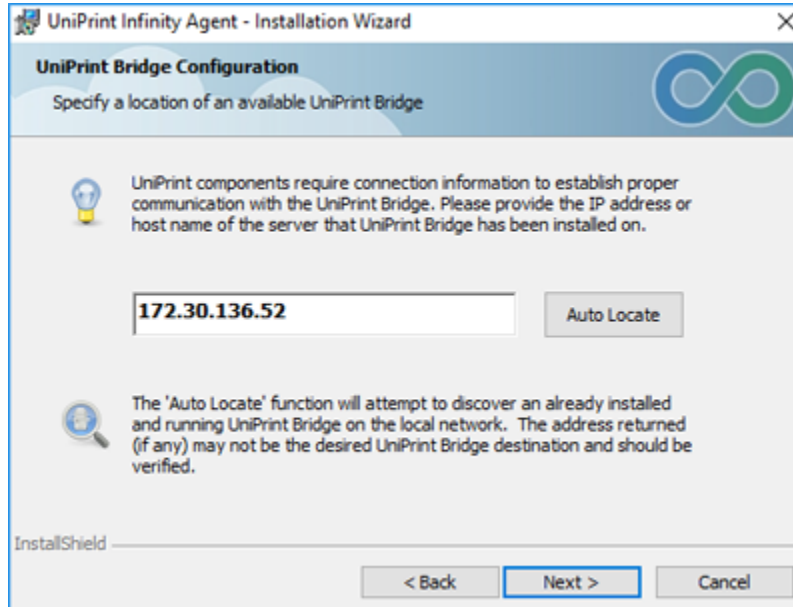


8. In the **Ready to Install the Program** dialog box, click **Install**. The UniPrint installer will copy files to the destination folder.
9. Click **Finish** to complete the installation.

STEP 4: Install UniPrint Infinity Agent on a Physical Desktop or Virtual Desktop Image


1. Download the Infinity Agent from <http://www.uniprint.net/members/download/agent/InfinityAgentInstaller10.exe>
2. On a physical or virtual desktop image, run the installation program **UniPrint10Agent_*.exe** as an administrator.
3. In the **UniPrint Infinity Agent Installation** dialog box, click **Next**.
4. In the **License Agreement** dialog box, click **I accept the terms in the license agreement** and then click **Next**.
5. In the **Destination Folder** dialog box, click **Next** to accept the default location for the UniPrint program files. Click **Change** to select a different location.

6. In the **UniPrint Bridge Configuration** dialog box, enter the **IP Address** of the UniPrint Bridge (License Server) and then click **Next**.




7. In the **Ready to Install the Program** dialog box, click **Install**. The UniPrint installer will copy files to the destination folder.
8. Click **Finish** to complete the installation.

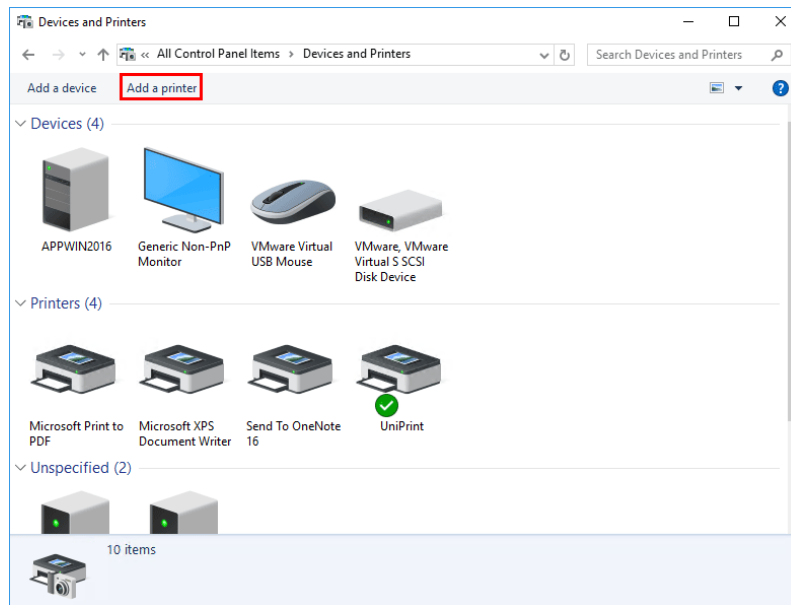
STEP 5: Install a Test Printer On The UniPrint Print Server

1. On the UniPrint Print Server (Server 2), open **Print Management**.
2. Click **Add a printer** and then follow the printer manufacturer's instructions for installing their printer driver.
3. Click  and then click **Management Console**.
4. Under **Properties & Settings**, click **Printers**.
5. Ensure that the test printer appears as type **Gateway**.

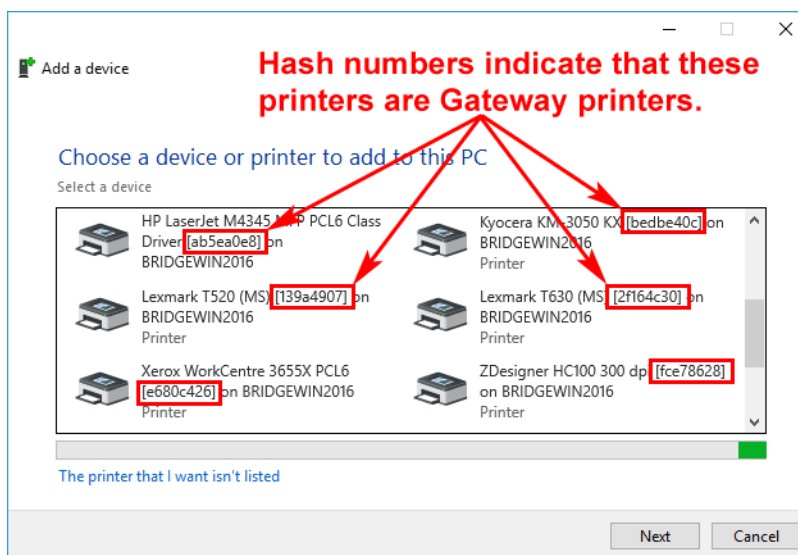
STEP 6: Add the Test Printer In A User Session

1. Log onto the virtual desktop image or physical desktop as you normally would to access applications.
2. Click  and then click **Control Panel**. Double-click **Devices and Printers**.

3. Click **Add a Printer**.

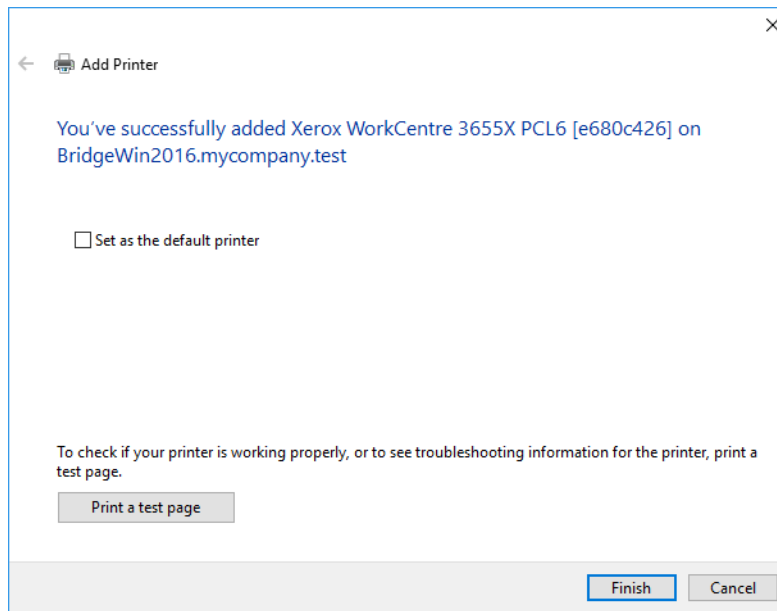


4. Click to select a Gateway printer which are usually indicated with hash numbers. Hash numbers are used to ensure that each Gateway printer is unique and for users they are good indicators that the printer is indeed a Gateway printer.

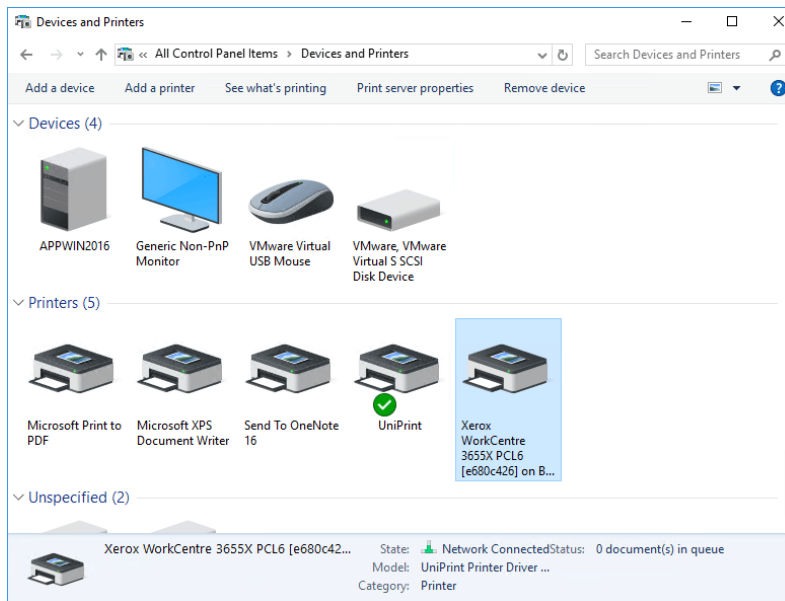


5. Click **Next**.

6. If you want this printer to be set as the session default, select **Set as default printer** and then click **Finish**.



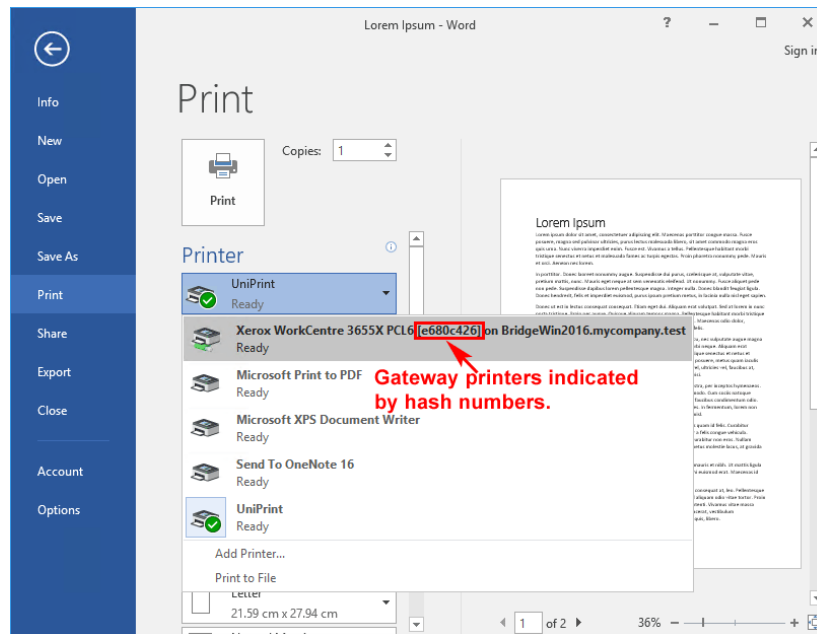
7. The Gateway printer is now added to the session and is available for printing.



Printing From A Physical Desktop or Virtual Desktop Image

1. Log onto a physical desktop or virtual desktop image as you normally would to access applications.
2. Open an application from which to print, for example, Microsoft Word.
3. Print from the application. For example in Microsoft Word 2016, click the **File** tab and then click **Print**.

4. Select the test **Gateway** printer (one with the hash numbers).



5. And then click **Print**.

6. After 15 days from the installation, the demo license expires and any documents printed will have a watermark printed across each page. To remove this watermark, contact sales@processfusion.com to request an extended demo license or to purchase UniPrint Infinity.

