



Quick Start Guide

For SecurePrint Deployments

Released: October 2022
Version 10.0.5

Disclaimer and Copyright Notice

Process Fusion makes no representations or warranties with respect to the contents or use of this publication. Process Fusion especially disclaims any expressed or implied warranties, merchantability or fitness for any particular purpose. Process Fusion reserves the right to make any changes in specifications and other information contained in this publication without prior notice and without obligation to notify any person or entity of such revisions or changes.

© Copyright 1999 - 2022 Process Fusion All rights reserved.

Information in this document is subject to change without notice. Companies, names and data used in examples herein are fictitious unless otherwise noted. Other than printing one copy for personal use, no part of this document may be reproduced or transmitted in any form or by any means, electronic or mechanical, for any purposes, without the expressed written consent of:

Process Fusion
1000-3250 Bloor St. W., East Tower
Toronto, Ontario
Canada M8X 2X9
(905) 363-0118
Toll Free: (866) 488-3188 (North America only)
www.uniprint.net

Intellectual Property Acknowledgements

UniPrint and UniPrint Infinity are registered trademarks of Process Fusion Registration numbers TMA562,455 and TMA857,027 in Canada and filing number 85-663,579 in the United States. Process Fusion products are also registered as United States Patent Numbers 7,064,856, 7,265,867 and 7,602,522.

Microsoft, Windows, Windows 2019/2022, Windows 11, Microsoft Access, Microsoft Word, Remote Desktop Protocol (RDP), ASP.NET and Active Directory are either registered trademarks or trademarks of Microsoft Corporation.

Citrix, MetaFrame, Presentation Server, XenApp, XenDesktop and ICA (Independent Computing Architecture) are registered trademarks or trademarks of Citrix Systems.

Adobe, Acrobat, Reader are registered trademarks of Adobe Systems Inc.

All other trademarks and registered trademarks are the property of their owners.

Table of Contents

Introduction 1

Installation Scenario 1

 Recommended System Requirements 2

 Recommended Installation Procedure 2

STEP 1: Install UniPrint Bridge 2

STEP 2: Install UniPrint Print Server 7

STEP 3: Install UniPrint Application Server 9

STEP 4: Install and Activate the SecurePrint Emulator 11

STEP 5: Install a Test Printer On The UniPrint Print Server 13

STEP 6: Add Printers to the vPad or Emulator 14

STEP 7: Add the Test Printer and UniPrint VPQ In A User Session 16

Printing From An ICA/RDP Session to the UniPrint VPQ 18

Introduction

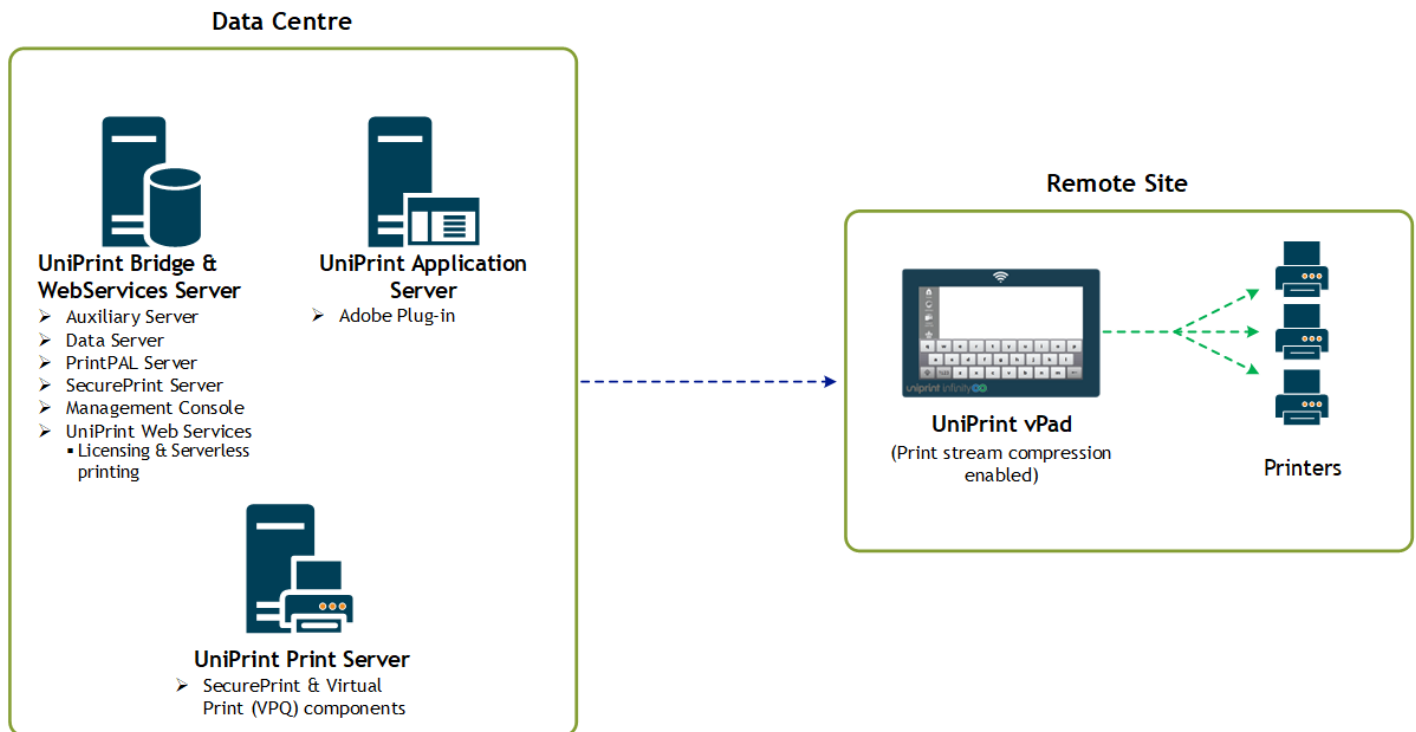
This step-by-step guide is intended for those who want set up UniPrint Infinity and SecurePrint with minimal configuration. Only the necessary steps required to start printing from an ICA/RDP session will be covered. For additional assistance on customizing UniPrint Infinity or setting up many of UniPrint Infinity's features such as SecurePrint, Archiving, Statistics Monitoring and Mobile Printing refer to the [UniPrint Infinity Administrator's Guide](#).



NOTE: To access advanced printer preferences, for example, stapling and hole punching, use Printer Profiles. For more information on setting up and using Printer Profiles, refer to the [UniPrint Infinity Administrator's Guide](#).

This quick start guide is specific to secure pull printing with SecurePrint. Only the necessary components will be installed and only instructions on printing from a user session will be presented.

Installation Scenario



This scenario requires three servers and either a workstation or a vPad device. The first server will have UniPrint Bridge with the License Server, and SecurePrint Server installed. The second server will have UniPrint Print Server and SecurePrint print server components installed. The third server will have UniPrint Application Server installed. The workstation will have the SecurePrint emulator installed and also function as a client to connect to the application server for testing purposes. If a vPad device is available, the workstation will only be required for connecting to the terminal server.

Recommended System Requirements

Server 1: UniPrint Bridge requires one of the following supported operating systems and all of the roles and features listed:

- Microsoft Windows Server 2016
- Microsoft Windows Server 2019
- Microsoft Windows Server 2022

Server 2: UniPrint Print Server requires one of the following supported operating systems and all of the roles and features listed:

- Microsoft Windows Server 2016
- Microsoft Windows Server 2019
- Microsoft Windows Server 2022

Server 3: UniPrint Application Server requires one of the following supported operating systems and all of the roles and features listed:

- Microsoft Windows Server 2016
- Microsoft Windows Server 2019
- Microsoft Windows Server 2022
- with Remote Desktop Services role installed.

Workstation: SecurePrint emulator and connecting client device requires one of the following supported operating systems:

- Microsoft Windows 10 or later

Recommended Installation Procedure



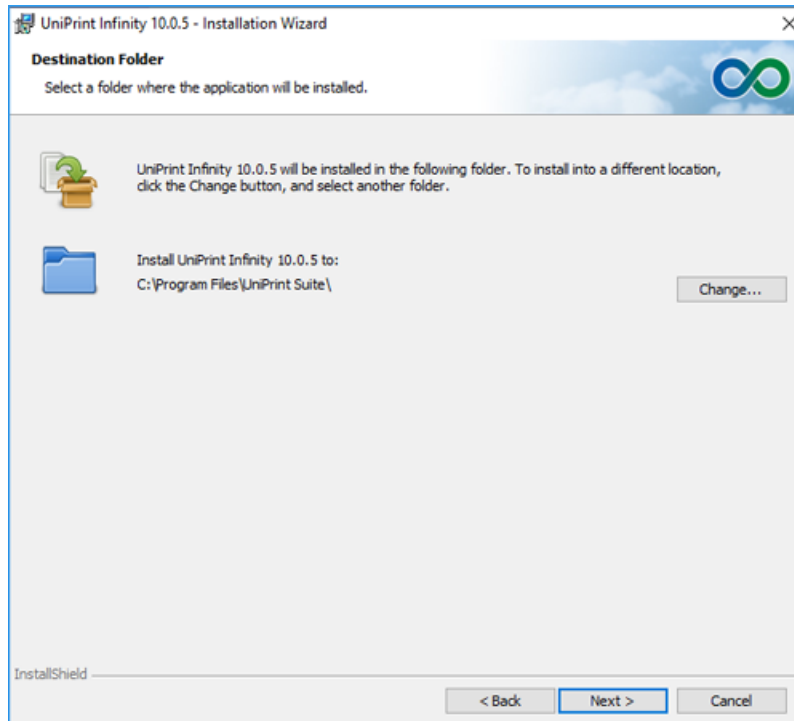
NOTE: The following instructions explain how to deploy UniPrint Infinity in a print server environment using the minimum number of computers. This installation scenario is designed and intended for testing purposes and does not reflect production best practices.

1. Install UniPrint Bridge and UniPrint Web Services on Server 1.
2. Install UniPrint Print Server on Server 2.
3. Install UniPrint Application Server on Server 3.
4. Install the SecurePrint emulator on the workstation and then activate it on Server 1. If you already have a vPad device, then you don't need to install the SecurePrint emulator, since the vPad comes with pre-installed software. However, you will still need to activate the vPad on the SecurePrint Server (Server 1).
5. Install a test printer on the UniPrint Print Server (Server 2).
6. Add the test printer to the vPad through the Management Console on Server 1.
7. Add the test printer in a user session. PrintPAL can be used to replace this step. See the [UniPrint Infinity Administrator's Guide](#) for instructions on how to set up PrintPAL.

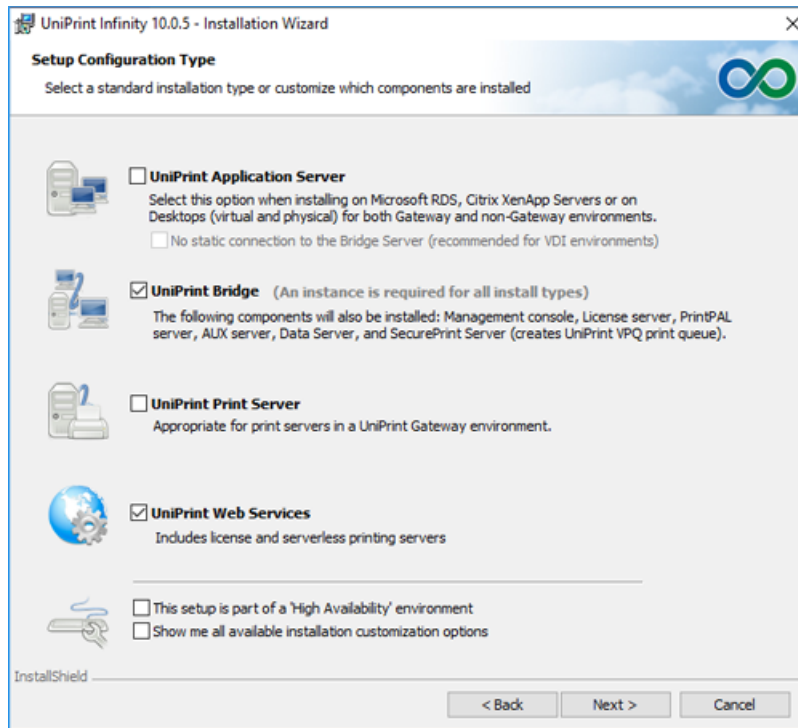
STEP 1: Install UniPrint Bridge

1. On Server 1, run the installation program **UniPrint10_x*_Setup.exe** as an administrator.

2. In the **UniPrint Infinity Installation** dialog box, click **Next**.
3. In the **License Agreement** dialog box, click **I accept the terms in the license agreement** and then click **Next**.
4. In the **Destination Folder** dialog box, click **Next** to accept the default location for the UniPrint program files. Click **Change** to select a different location.

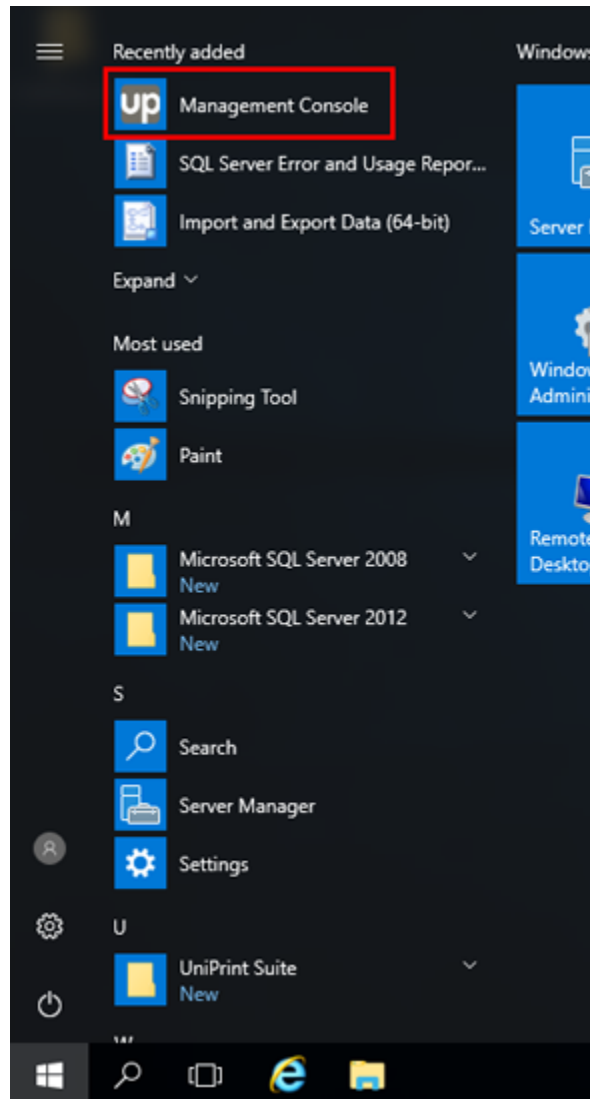


5. In the **Setup Configuration Type** dialog box, select **UniPrint Bridge**, **UniPrint Web Services** and then click **Next**.
NOTE: By default UniPrint Web Services will automatically be selected when UniPrint Bridge is selected.

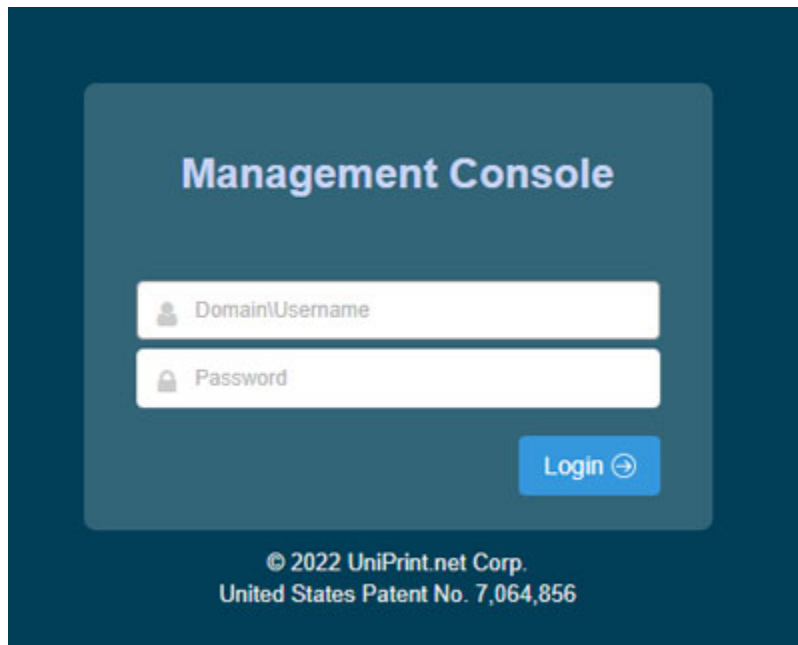


6. Some components, for example, the Management Console and SecurePrint, require SQL Server to be installed. Click **Next**.
7. In the **Ready to Install the Program** dialog box, click **Install**. The UniPrint installer will copy files to the destination folder.
8. Click **Finish** to complete the installation.

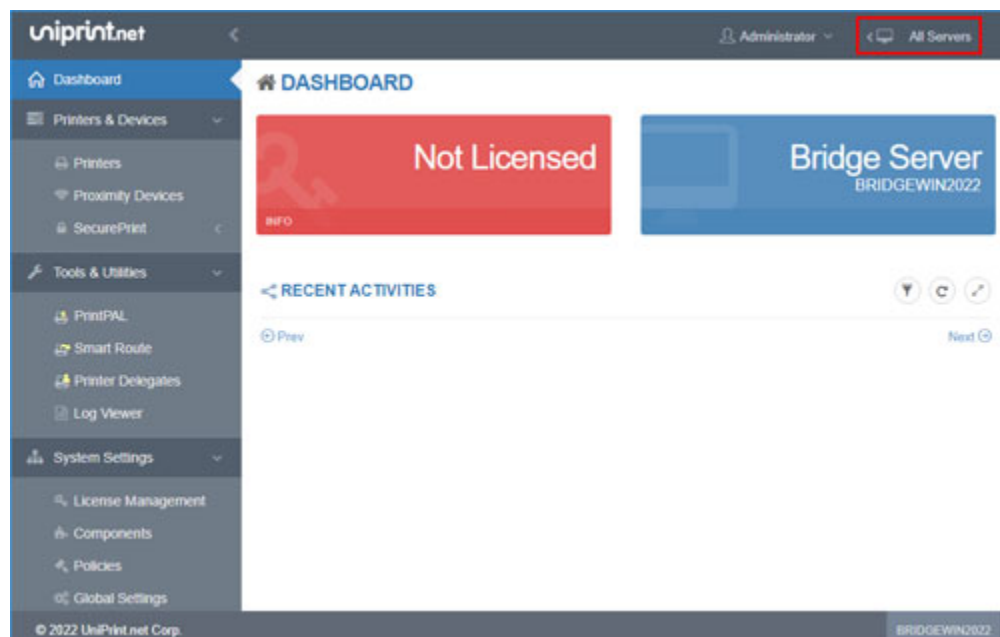
9. Click  and then under **Recently added**, click **Management Console**.



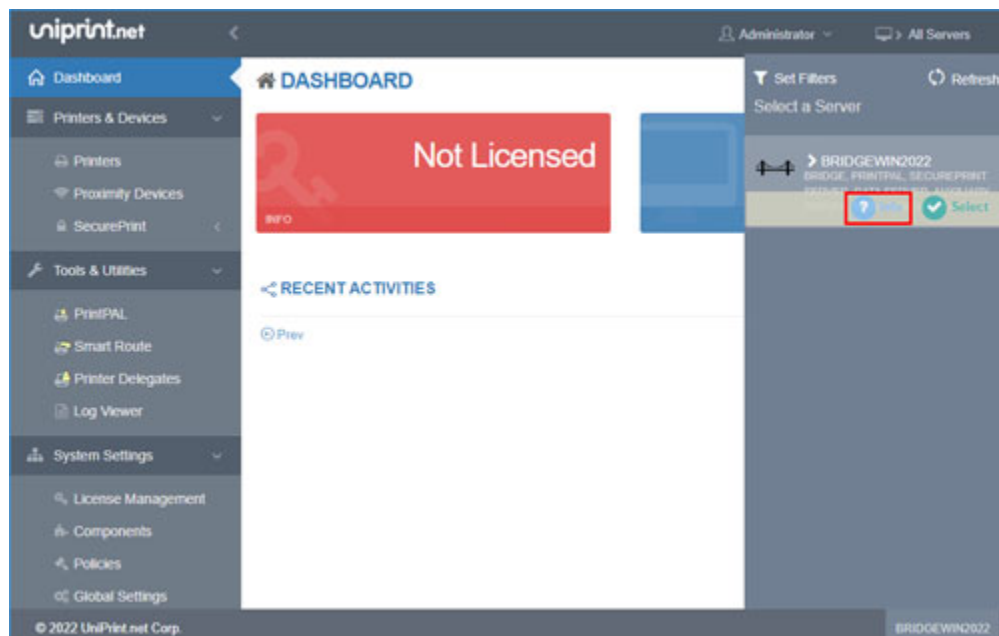
10. Enter administrative domain credentials and then click **Login**.



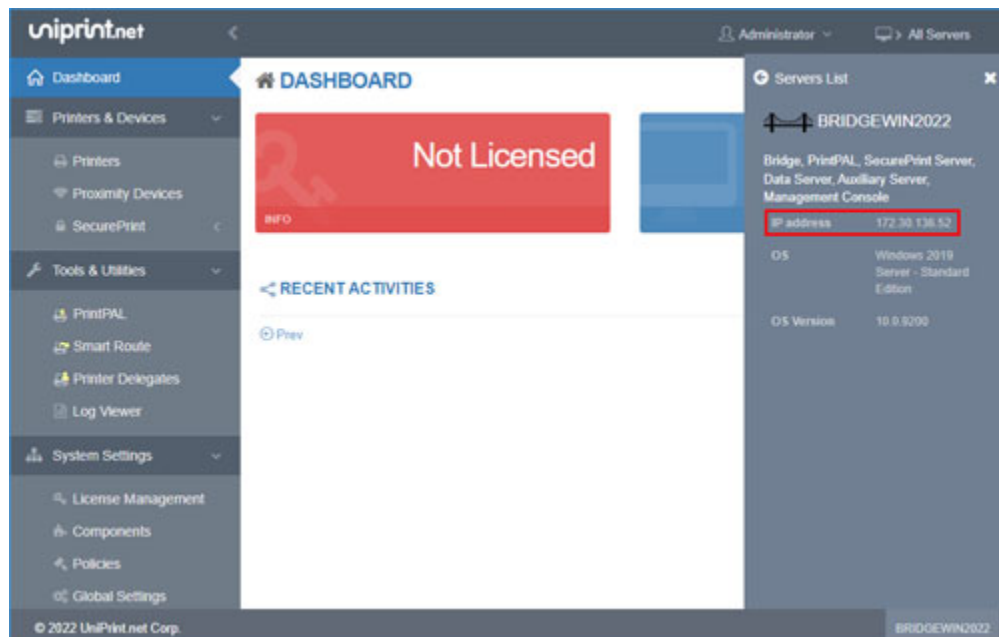
11. At the top of the console, click **All Servers**.



12. Mouse over the UniPrint Bridge and then click **Info**.



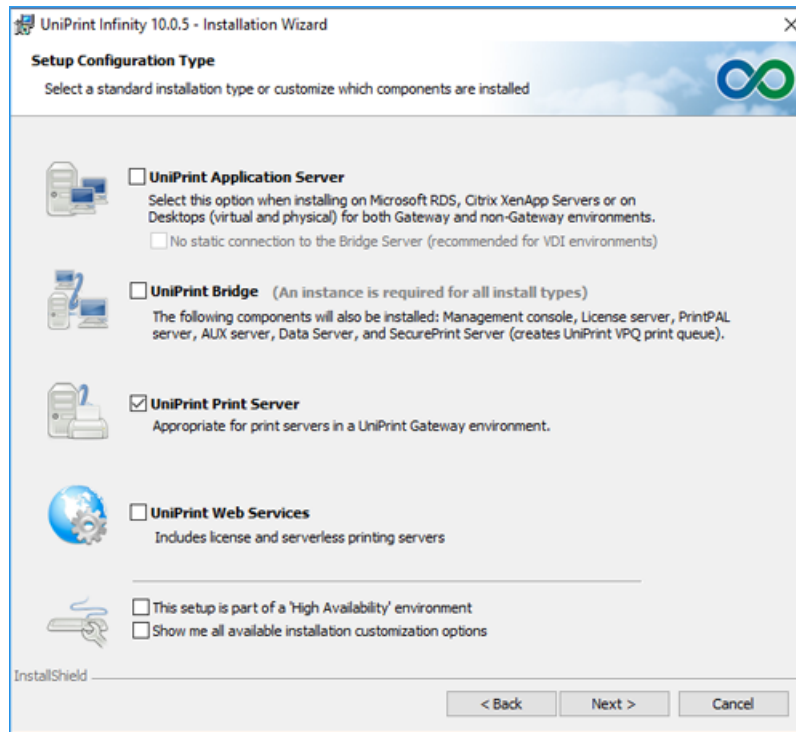
13. Take note of the IP address. This is required when installing the UniPrint Print and Application Servers.



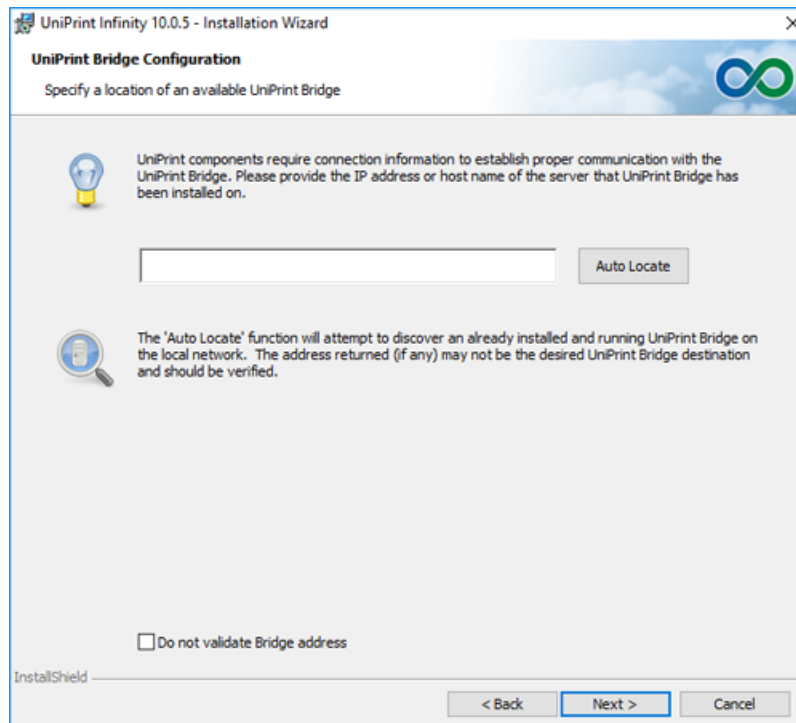
STEP 2: Install UniPrint Print Server

1. On Server 2, run the installation program **UniPrint10_x*_Setup.exe** as an administrator.
2. In the **UniPrint Infinity Installation** dialog box, click **Next**.
3. In the **License Agreement** dialog box, click **I accept the terms in the license agreement** and then click **Next**.

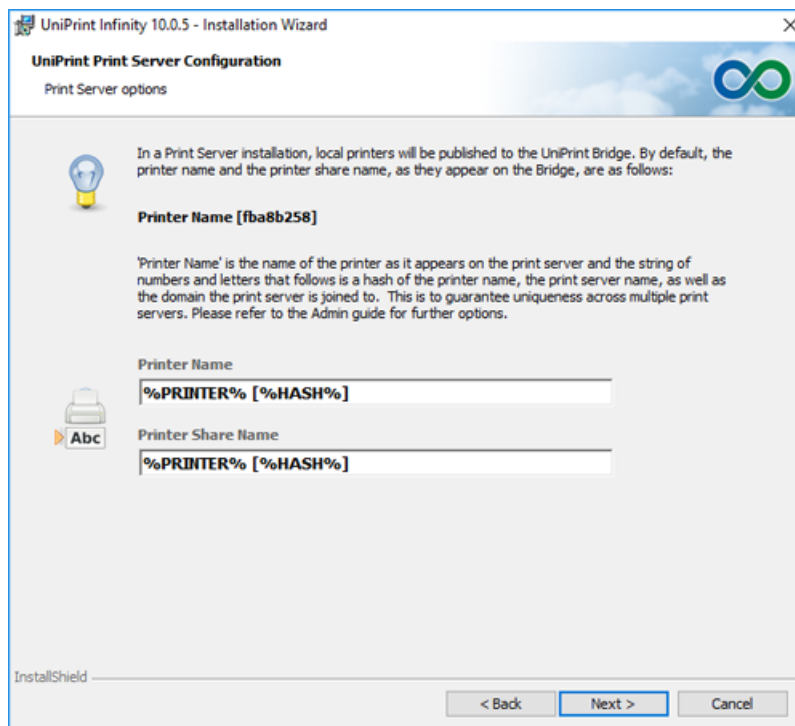
4. In the **Destination Folder** dialog box, click **Next** to accept the default location for the UniPrint program files. Click **Change** to select a different location.
5. In the **Setup Configuration Type** dialog box, select **UniPrint Print Server** and then click **Next**.



6. In the **UniPrint Bridge Configuration** dialog box, enter the **IP Address** of the UniPrint Bridge (License Server) and then click **Next**.



7. In the **Print Server Configuration** dialog box, click **Next**.

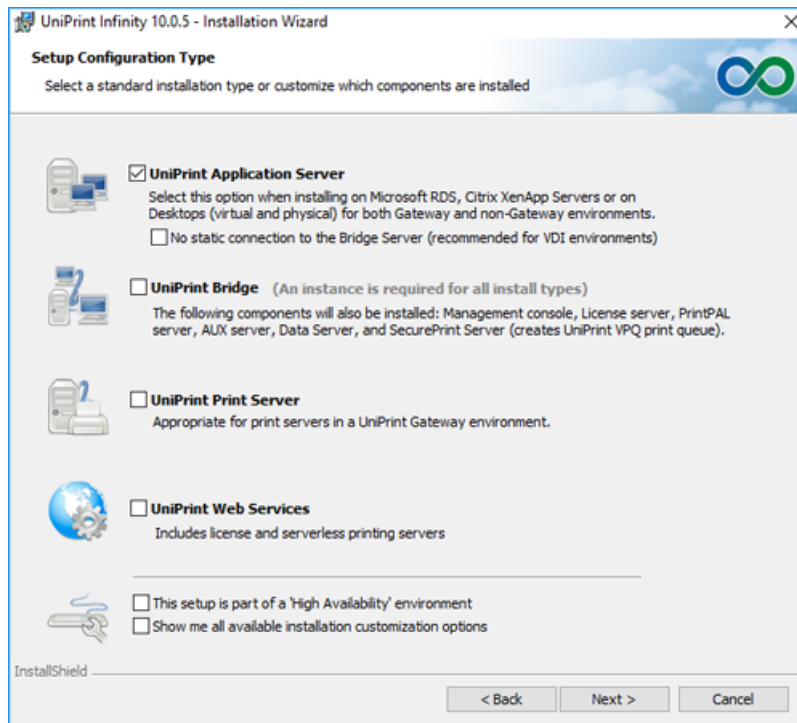


8. In the **Ready to Install the Program** dialog box, click **Install**. The UniPrint installer will copy files to the destination folder.
9. Click **Finish** to complete the installation.

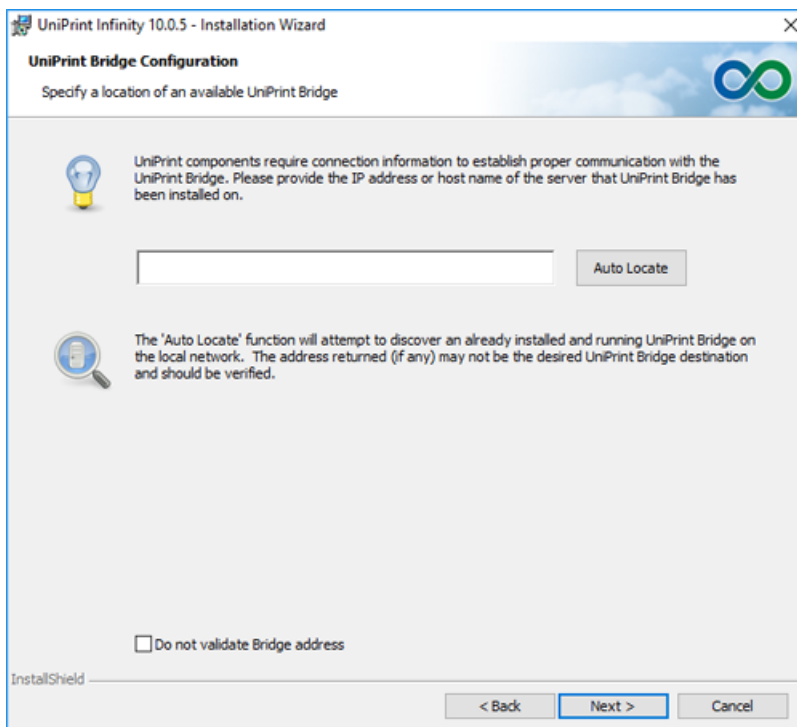
STEP 3: Install UniPrint Application Server

1. On Server 3, run the installation program **UniPrint10_x*_Setup.exe** as an administrator.
2. In the **UniPrint Infinity Installation** dialog box, click **Next**.
3. In the **License Agreement** dialog box, click **I accept the terms in the license agreement** and then click **Next**.
4. In the **Destination Folder** dialog box, click **Next** to accept the default location for the UniPrint program files. Click **Change** to select a different location.

5. In the **Setup Configuration Type** dialog box, select **UniPrint Application Server** and then click **Next**.



6. In the **UniPrint Bridge Configuration** dialog box, enter the **IP Address** of the UniPrint Bridge and then click **Next**.



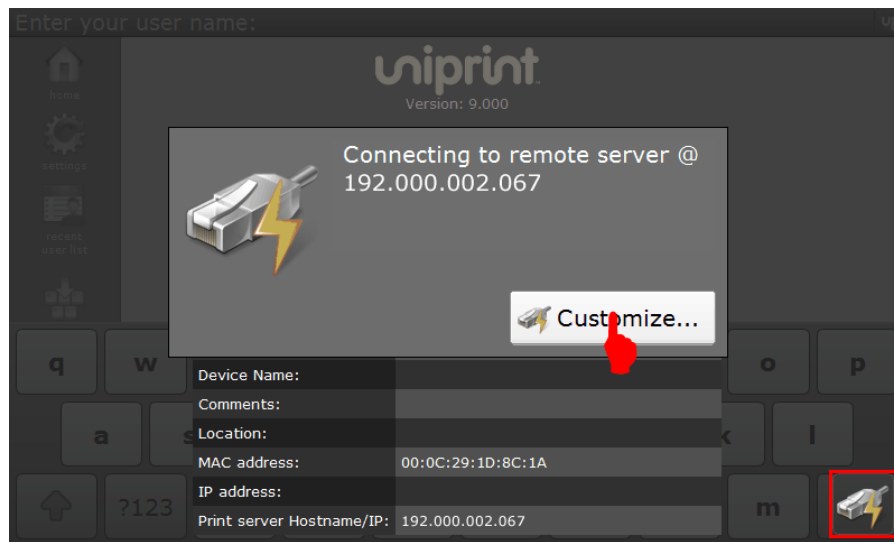
7. In the **Ready to Install the Program** dialog box, click **Install**. The UniPrint installer will copy files to the destination folder.

8. Click **Finish** to complete the installation.

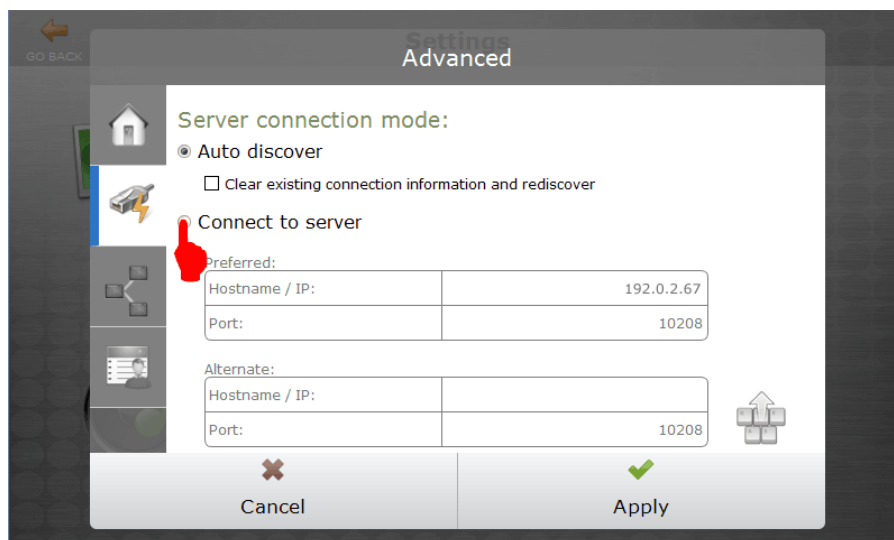
STEP 4: Install and Activate the SecurePrint Emulator

The SecurePrint Emulator can be run from any Windows machine. It does not have to be server-class, a client machine is acceptable. However, the machine must be connected to your network and visible to the UniPrint Print Server (Server 2).

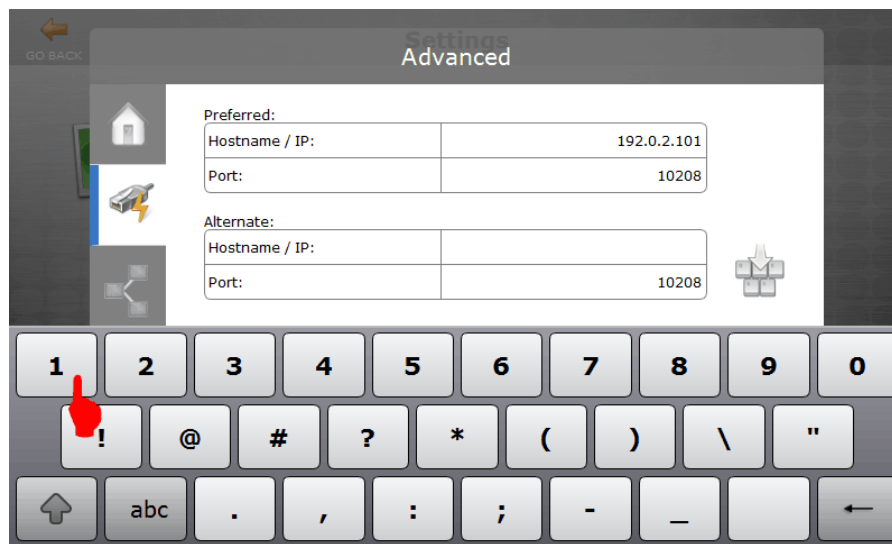
1. On a workstation, run the self-extracting executable file, **SecurePrint Emulator.exe** as an administrator.
2. Ensure that the vPad or emulator is connected to the correct UniPrint Print Server.
 - a. If the **Print Server IP address** is pointing to the wrong UniPrint Print Server, tap **Customize** or **Settings**.



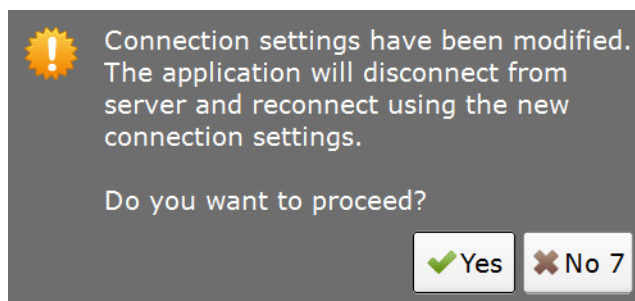
- b. Tap **Connect to Server**.



- c. Change the IP address and port number to that of the desired UniPrint Print Server and then tap **Apply**.

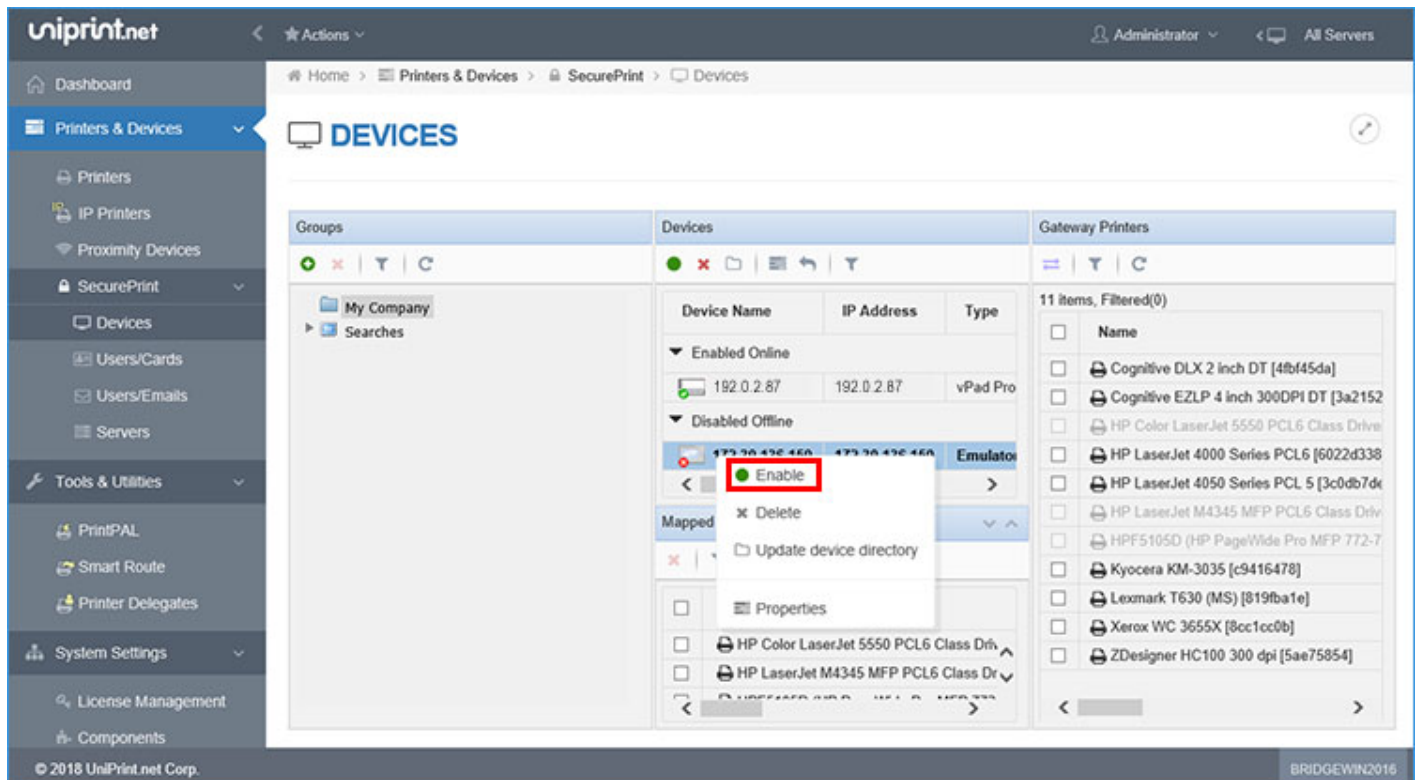


- d. Tap **Yes**.

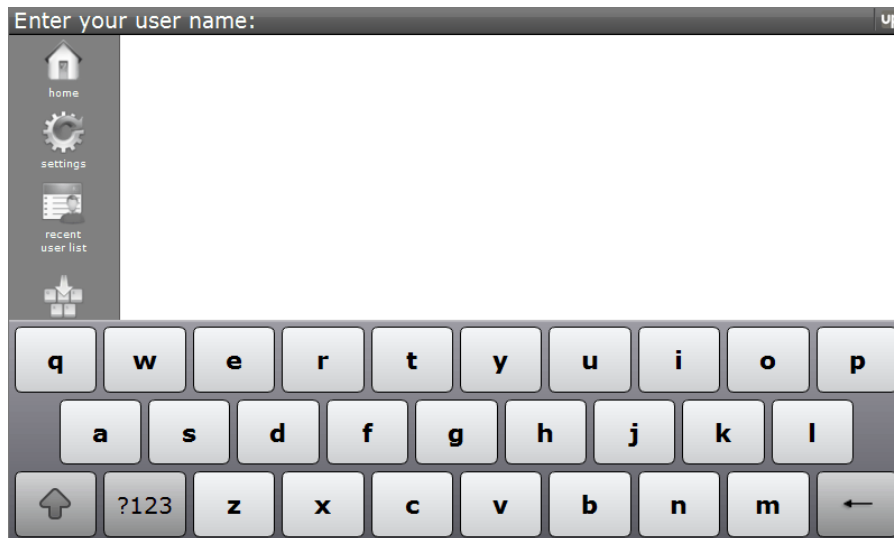


3. On the UniPrint Bridge, open the **Management Console**.
4. Under **Properties & Settings**, click **SecurePrint** and then click **Devices**.

5. Right-click the vPad or emulator device and then select **Enable**.



6. Once enabled, return to the vPad or emulator and the user name entry screen should appear.




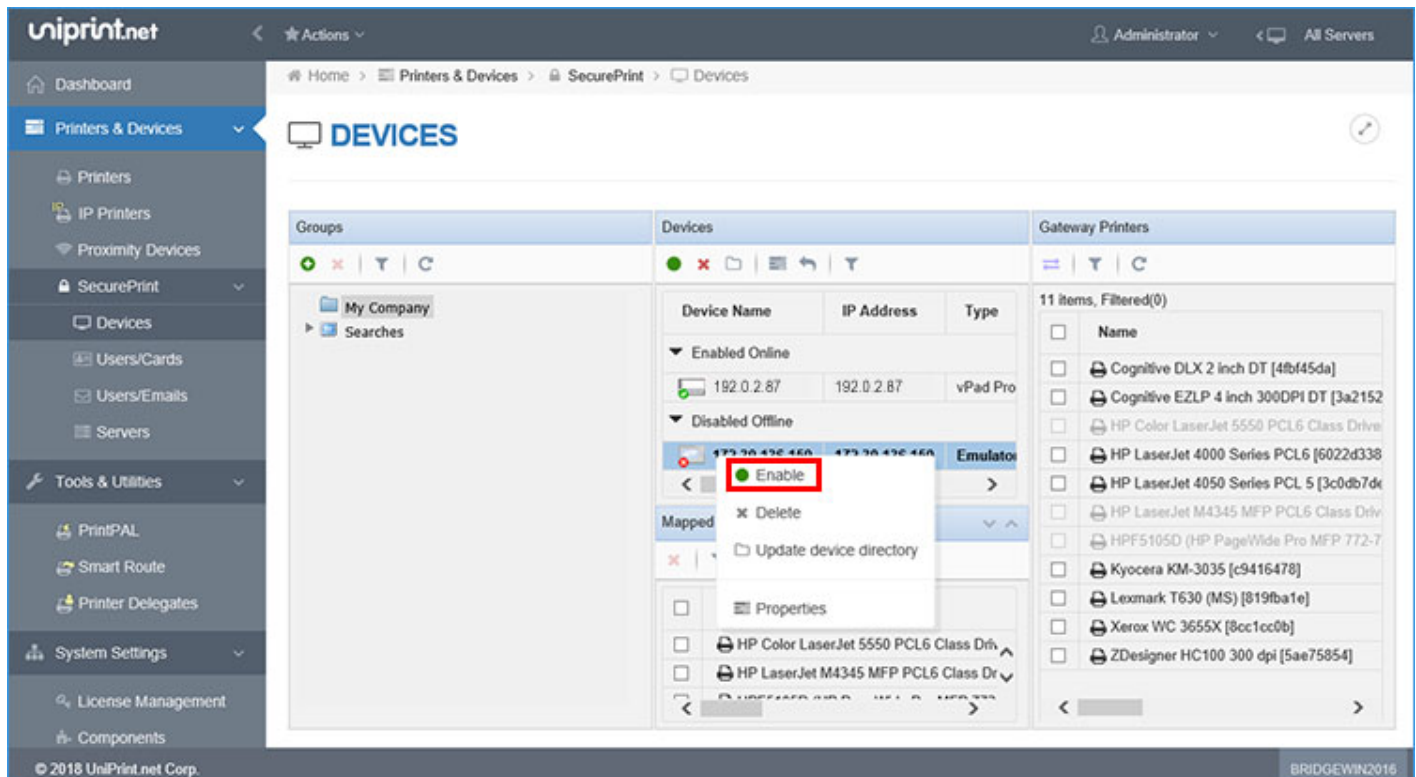
STEP 5: Install a Test Printer On The UniPrint Print Server

1. On the UniPrint Print Server (Server 2), open **Print Management**.
2. Click **Add a printer** and then follow the printer manufacturer's instructions for installing their printer driver.

3. On the UniPrint Bridge, open the **Management Console**.
4. Under **Properties & Settings**, click **Printers**.
5. The new printer will appear in the printer list of type **Gateway**.

STEP 6: Add Printers to the vPad or Emulator

1. On the UniPrint Bridge (Server 1), open the **Management Console**.
2. Under **Properties & Settings**, click **SecurePrint** and then click **Devices**.
3. Click to select the enabled vPad or emulator. Under **Gateway Printers**, click to select the test printer and any other printers to associate this vPad with. Click  .

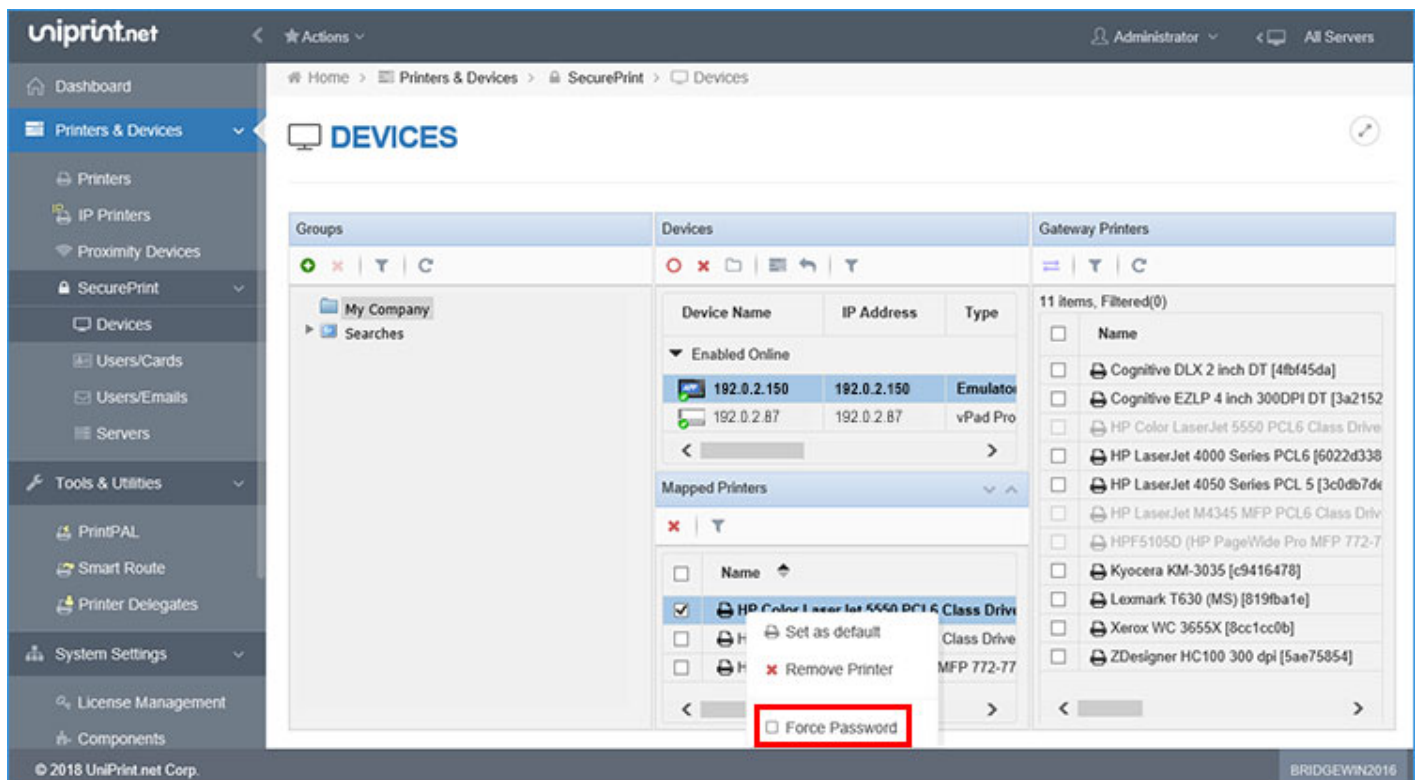


The screenshot shows the UniPrint.net Management Console interface. The left sidebar contains navigation options like Dashboard, Printers & Devices, SecurePrint, and Tools & Utilities. The main area is titled 'DEVICES' and contains three panels: Groups, Devices, and Gateway Printers.

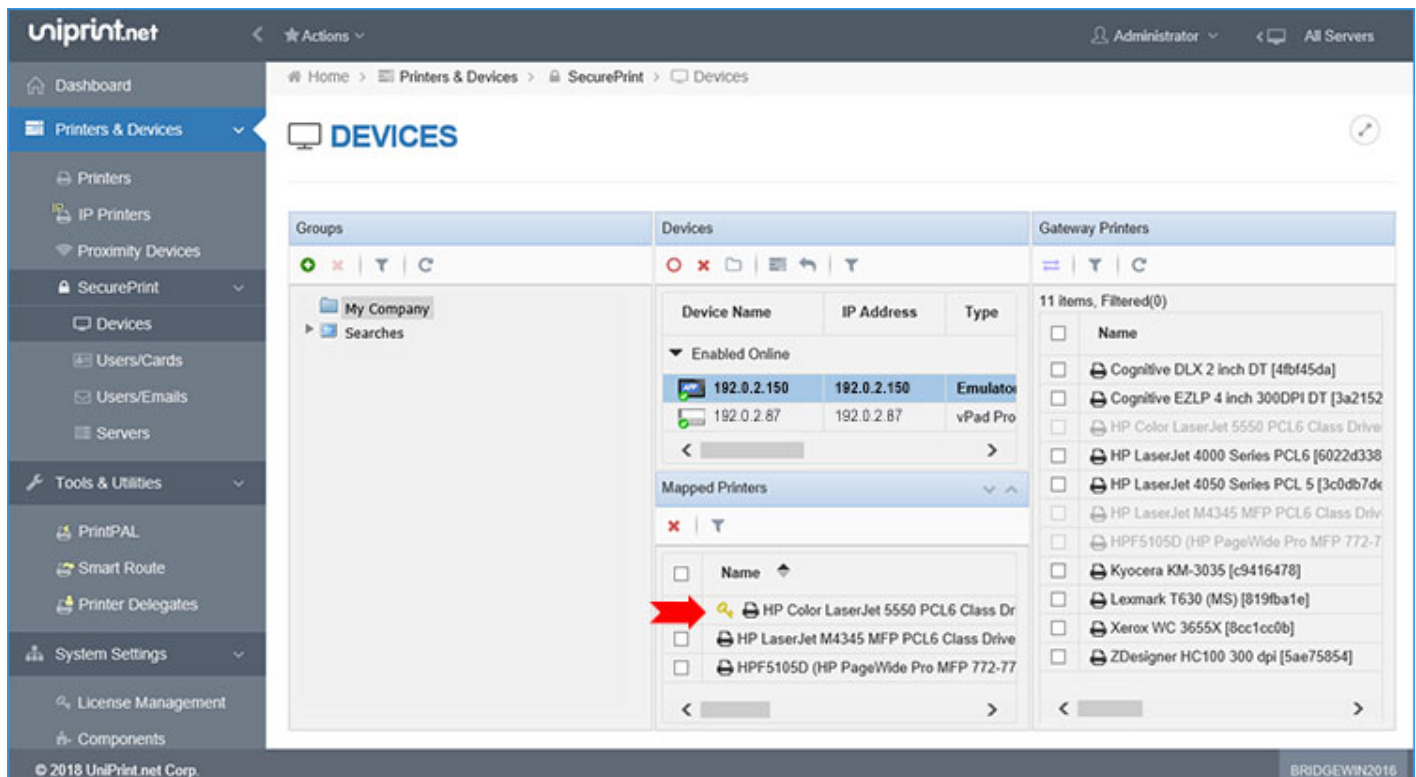
Groups	Devices	Gateway Printers															
My Company Searches	<table border="1"> <thead> <tr> <th>Device Name</th> <th>IP Address</th> <th>Type</th> </tr> </thead> <tbody> <tr> <td colspan="3">▼ Enabled Online</td> </tr> <tr> <td>192.0.2.87</td> <td>192.0.2.87</td> <td>vPad Pro</td> </tr> <tr> <td colspan="3">▼ Disabled Offline</td> </tr> <tr> <td>172.30.436.460</td> <td>172.30.436.460</td> <td>Emulator</td> </tr> </tbody> </table>	Device Name	IP Address	Type	▼ Enabled Online			192.0.2.87	192.0.2.87	vPad Pro	▼ Disabled Offline			172.30.436.460	172.30.436.460	Emulator	11 items, Filtered(0) Name Cognitive DLX 2 inch DT [4fb45da] Cognitive EZLP 4 inch 300DPI DT [3a2152] HP Color LaserJet 5550 PCL6 Class Drive HP LaserJet 4000 Series PCL6 [6022d338] HP LaserJet 4050 Series PCL 5 [3c0db7de] HP LaserJet M4345 MFP PCL6 Class Drive HPF5105D (HP PageWide Pro MFP 772-7 Kyocera KM-3035 [c9416478] Lexmark T630 (MS) [819fba1e] Xerox WC 3655X [8cc1cc0b] ZDesigner HC100 300 dpi [5ae75854]
Device Name	IP Address	Type															
▼ Enabled Online																	
192.0.2.87	192.0.2.87	vPad Pro															
▼ Disabled Offline																	
172.30.436.460	172.30.436.460	Emulator															

In the 'Devices' panel, a context menu is open for the 'Emulator' device, showing options: Enable (highlighted), Delete, Update device directory, and Properties.


4. To enforce a password on those printers, under **Mapped Printers**, right-click a printer and then click **Force Password**.

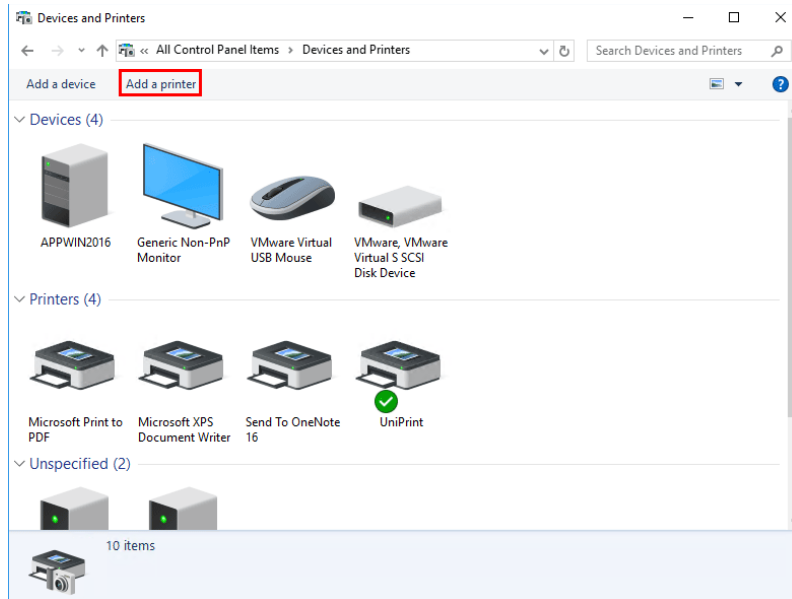


5. A golden key will appear next that printer.

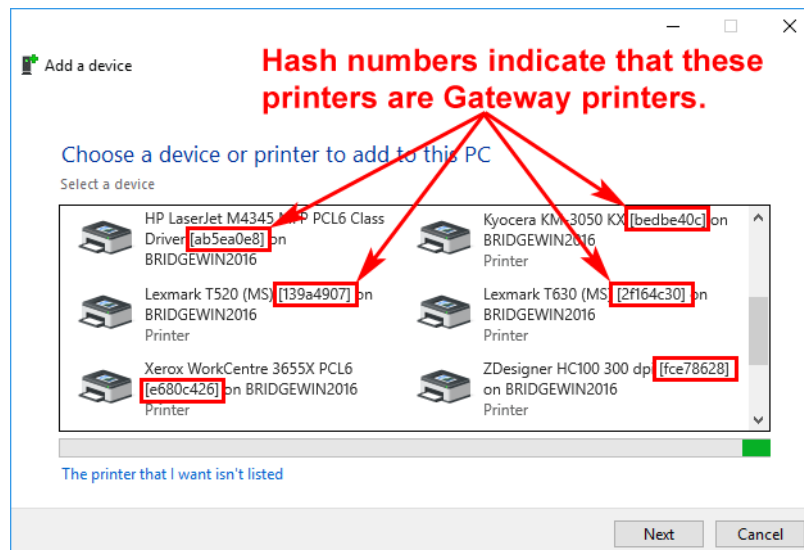


STEP 7: Add the Test Printer and UniPrint VPQ In A User Session

1. From a client device, log onto the application server as you normally would through RDP or ICA to access applications.
2. Click  and then click **Control Panel**. Double-click **Devices and Printers**.
3. Click **Add a Printer**.

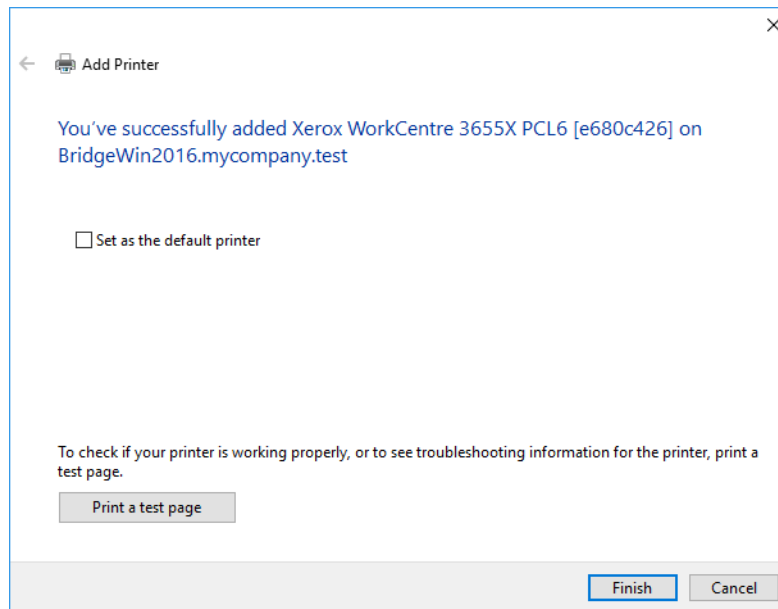


4. Click to select a Gateway printer which are usually indicated with hash numbers. Hash numbers are used to ensure that each Gateway printer is unique and for users they are good indicators that the printer is indeed a Gateway printer.

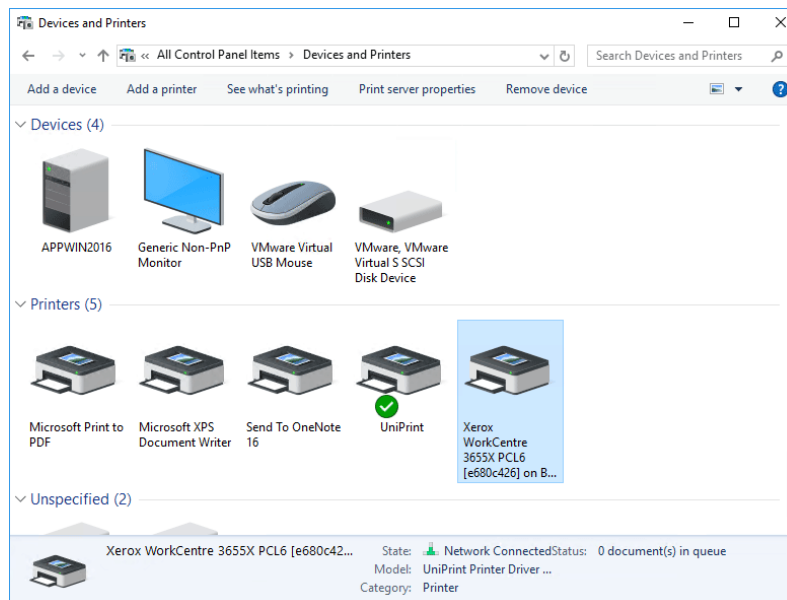


5. Click **Next**.

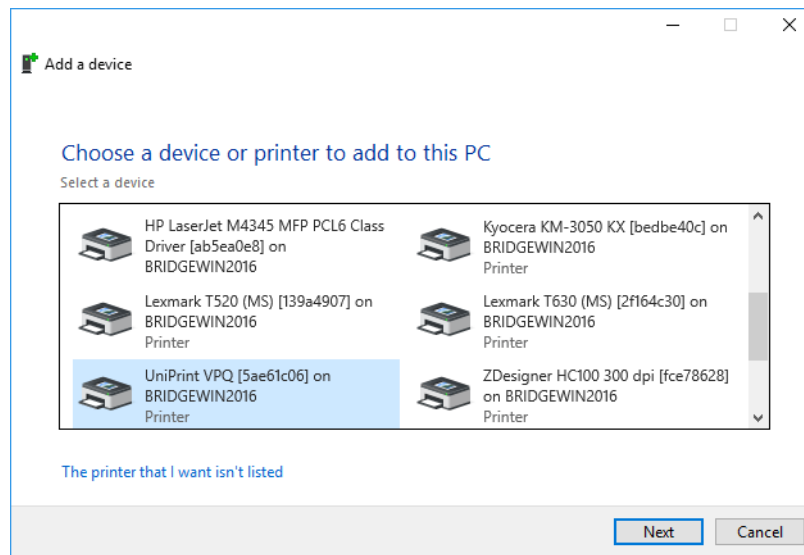
6. If you want this printer to be set as the session default, select **Set as default printer** and then click **Finish**.



7. The Gateway printer is now added to the session and is available for printing.

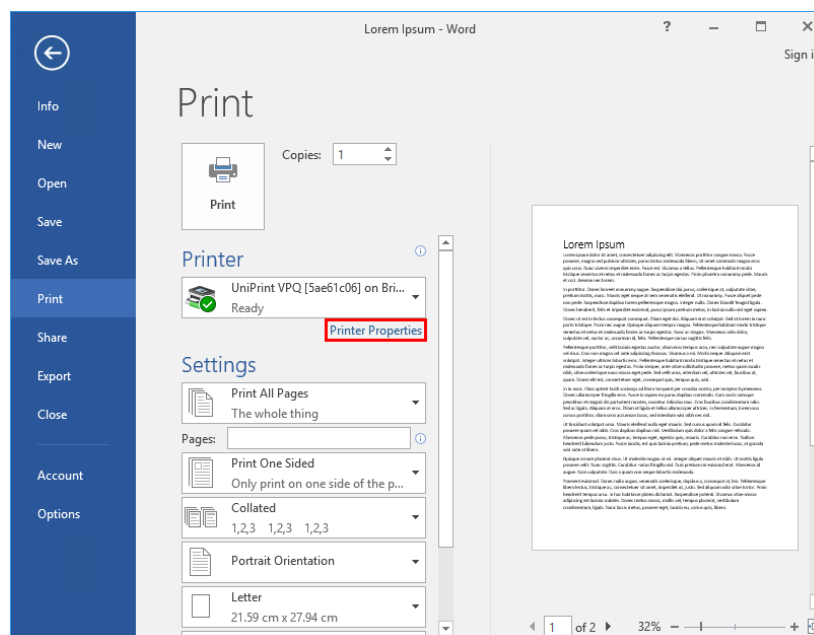


8. Repeat steps 3 to 6 by adding the **UniPrint VPQ** (virtual print queue). The UniPrint VPQ will also have a hash number associated with it. By adding the UniPrint VPQ, you will be able to fully test SecurePrint.

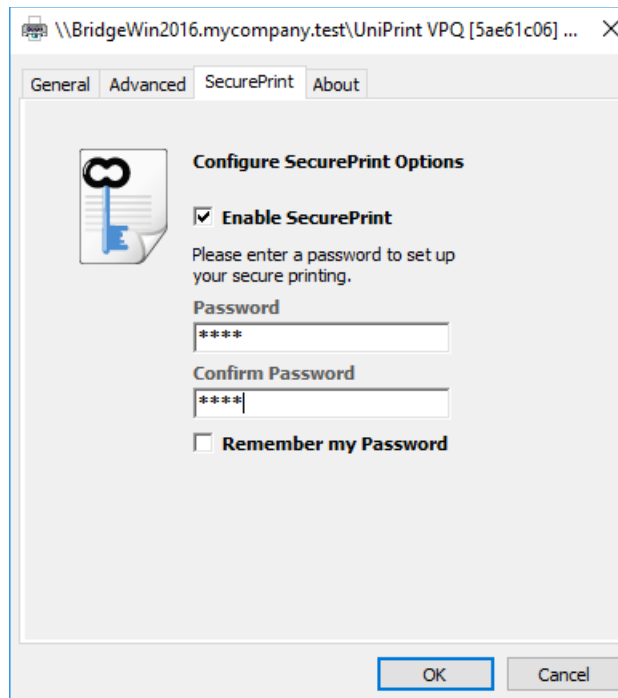


Printing From An ICA/RDP Session to the UniPrint VPQ

1. From the workstation, launch an ICA/RDP session by logging onto the application server as you normally would to access applications.
2. Open an application from which to print, for example, Microsoft Word.
3. Print from the application. For example in Microsoft Word 2016, click the **File** tab and then click **Print**.
4. Select the **UniPrint VPQ** printer (one with hash numbers) and then click **Printer Properties**.

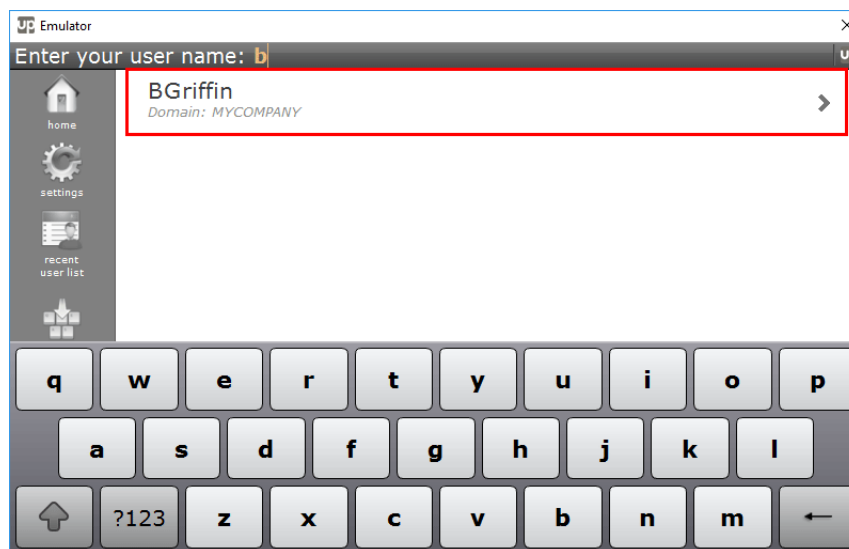


5. Click the **SecurePrint** tab and then select **Enable SecurePrint**. Enter a password twice. Click **OK**.

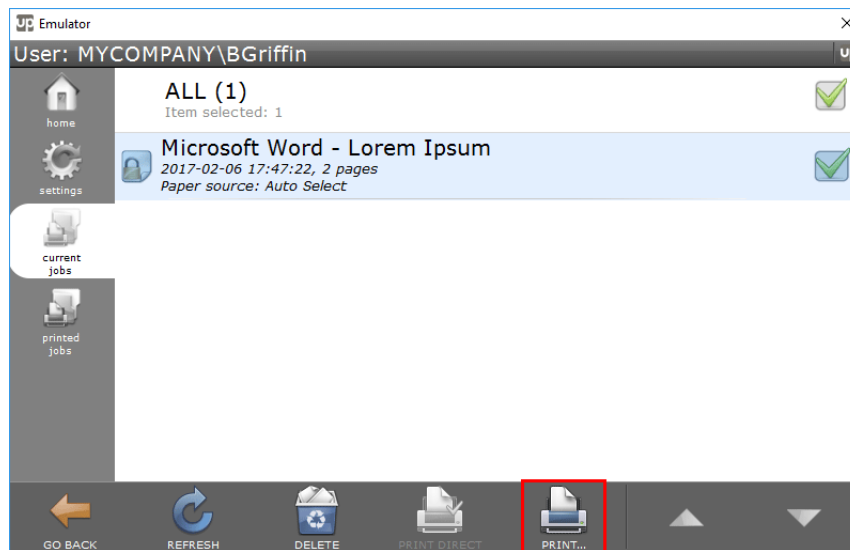


6. Click **Print**.

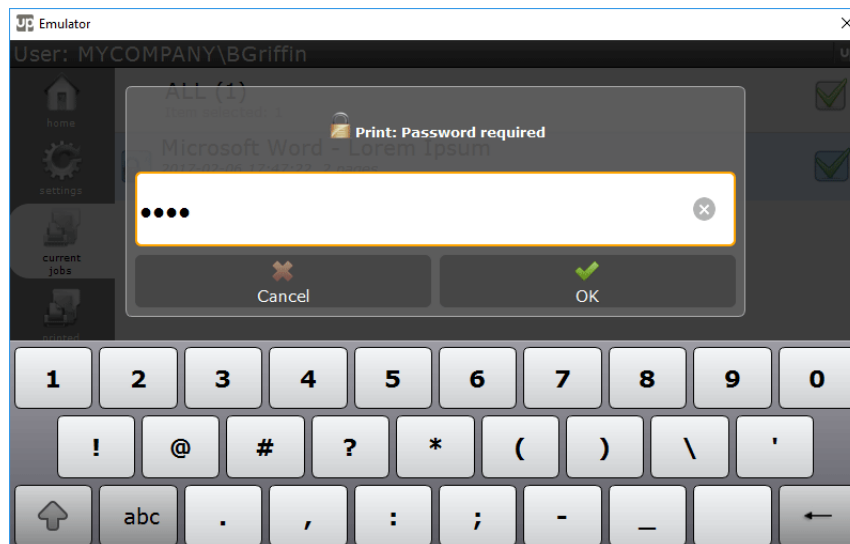
7. On the SecurePrint emulator or vPad device, enter your user name and then tap your user name.



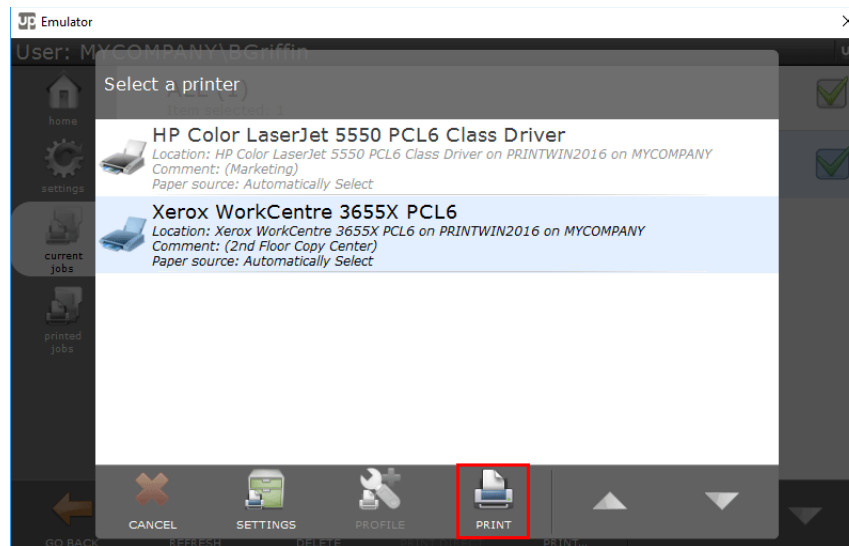
8. Tap to select your print job and then tap **Print**. **Note:** If UniPrint VPQ is selected, tap **Print** to select a printer to direct your print job to. If a Gateway printer is selected, you can either tap **Print Direct**, which will direct the print job to the Gateway printer or tap **Print** to select a different printer.



9. Enter your password and then tap **OK**.



10. Tap to select a printer and then tap **Print**.



11. After 15 days since the date of the install, the demo license expires and documents printed will appear with a watermark across each page. To remove this watermark, contact sales@processfusion.com to request an extended demo license or to purchase UniPrint Infinity.

