



# **Quick Start Guide**

## **For Server-Client Environments**

**Released: October 2022**  
**Version 10.0.5**

# Disclaimer and Copyright Notice

Process Fusion makes no representations or warranties with respect to the contents or use of this publication. Process Fusion especially disclaims any expressed or implied warranties, merchantability or fitness for any particular purpose. Process Fusion reserves the right to make any changes in specifications and other information contained in this publication without prior notice and without obligation to notify any person or entity of such revisions or changes.

© Copyright 1999 - 2022 Process Fusion All rights reserved.

Information in this document is subject to change without notice. Companies, names and data used in examples herein are fictitious unless otherwise noted. Other than printing one copy for personal use, no part of this document may be reproduced or transmitted in any form or by any means, electronic or mechanical, for any purposes, without the expressed written consent of:

Process Fusion  
1000-3250 Bloor St. W., East Tower  
Toronto, Ontario  
Canada M8X 2X9  
(905) 363-0118  
Toll Free: (866) 488-3188 (North America only)  
[www.uniprint.net](http://www.uniprint.net)

## Intellectual Property Acknowledgements

UniPrint and UniPrint Infinity are registered trademarks of Process Fusion Registration numbers TMA562,455 and TMA857,027 in Canada and filing number 85-663,579 in the United States. Process Fusion products are also registered as United States Patent Numbers 7,064,856, 7,265,867 and 7,602,522.

Microsoft, Windows, Windows 2019/2022, Windows 11, Microsoft Access, Microsoft Word, Remote Desktop Protocol (RDP), ASP.NET and Active Directory are either registered trademarks or trademarks of Microsoft Corporation.

Citrix, MetaFrame, Presentation Server, XenApp, XenDesktop and ICA (Independent Computing Architecture) are registered trademarks or trademarks of Citrix Systems.

Adobe, Acrobat, Reader are registered trademarks of Adobe Systems Inc.

All other trademarks and registered trademarks are the property of their owners.

# Table of Contents

**Introduction ..... 1**

**Installation Scenario ..... 1**

    Recommended System Requirements ..... 1

    Recommended Installation Procedure. .... 2

**STEP 1: Install UniPrint Bridge ..... 2**

**STEP 2: Install UniPrint Application Server ..... 7**

**STEP 3: Install UniPrint Client ..... 9**

**Printing From An ICA/RDP Session ..... 9**



## Introduction

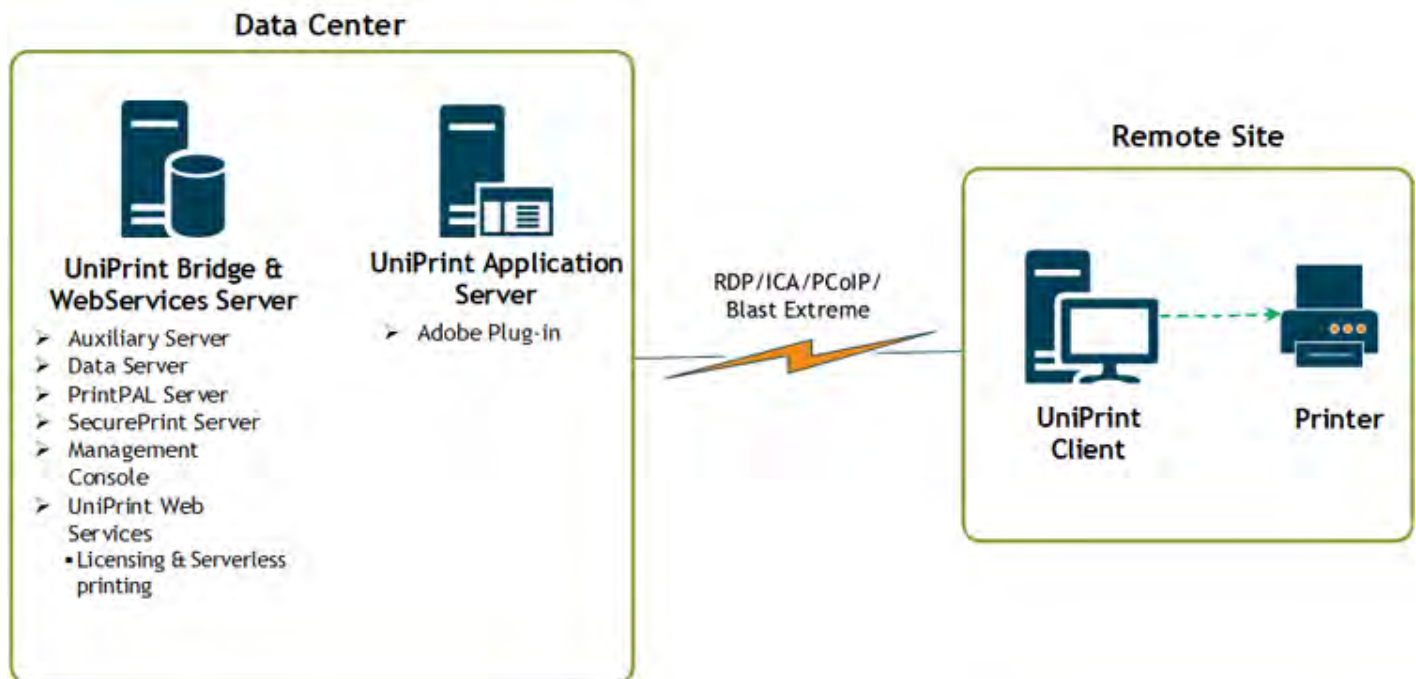
This step-by-step guide is intended for those who want set up UniPrint Infinity without any configuration. Only the necessary steps required to start printing from an ICA/RDP session will be covered. For additional assistance on customizing UniPrint Infinity or setting up many of UniPrint Infinity's features such as SecurePrint, Printer Delegation, Printer Profiles, Archiving, Statistics Monitoring and the vPad, refer to the [UniPrint Infinity Administrator's Guide](#).



**NOTE:** To access advanced printer preferences, for example, stapling and hole punching, user Printer Profiles. For more information on setting up and using Printer Profiles, refer to the [UniPrint Infinity Administrator's Guide](#).

This quick start guide is specific to client-server environments in which workstations with accessible hard disk drives, connect to Citrix/RDS servers to start a session. In this configuration, the UniPrint Client is required to be installed on each connecting workstation. For detailed information on the UniPrint Client, refer to the [UniPrint Client Administrator's Guide](#).

## Installation Scenario



This deployment requires two servers and at least one workstation. The first server will have UniPrint Bridge with the license server component installed. The second computer will have UniPrint Application Server installed. The workstation will have UniPrint Client installed.

## Recommended System Requirements

**Server 1:** UniPrint Bridge requires one of the following supported operating systems and all the roles and features listed:

- Microsoft Windows Server 2016
- Microsoft Windows Server 2019

- Microsoft Windows Server 2022

**Server 2:** UniPrint Application Server requires one of the following supported operating systems and all the roles and features listed:

- Microsoft Windows Server 2016
- Microsoft Windows Server 2019
- Microsoft Windows Server 2022
- with Remote Desktop Services role installed

**Workstation:** UniPrint Client requires the following:

- Microsoft Windows 10 or later
- Citrix Workspace App or Microsoft Remote Desktop Client

## Recommended Installation Procedure.



**NOTE:** The following instructions explain how to deploy UniPrint Infinity in a client-server environment using the minimum number of computers. This installation scenario is designed and intended for testing purposes and does not reflect production best practices.

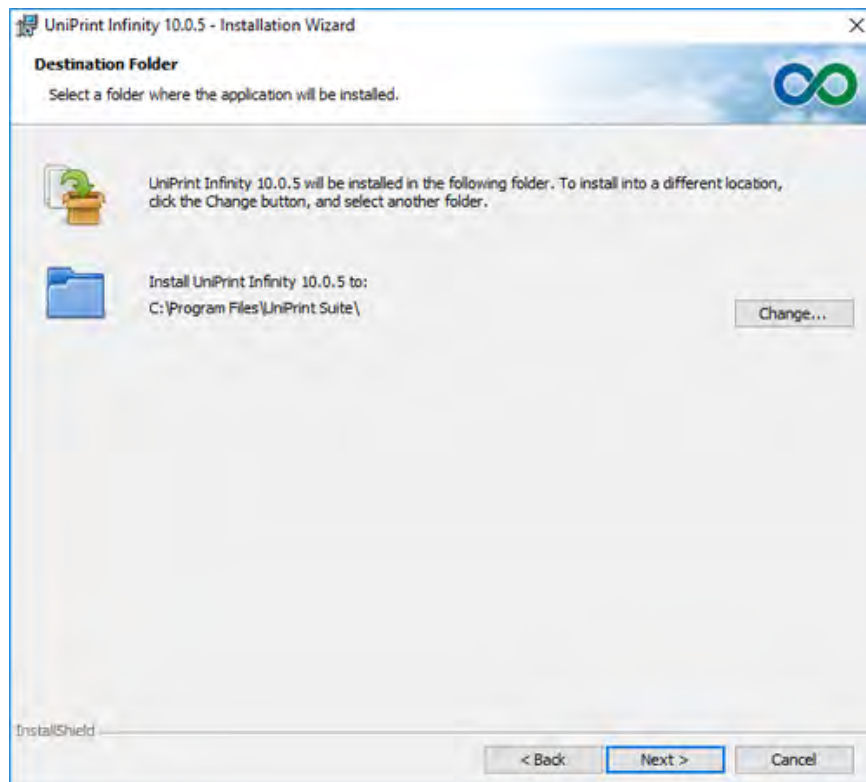
---

1. Install UniPrint Bridge and UniPrint Web Services on Server 1.
2. Install UniPrint Application Server on Server 2.
3. Install UniPrint Client on a workstation. Refer to the [UniPrint Client Administrator's Guide](#) for instructions.

## STEP 1: Install UniPrint Bridge

1. On Server 1, run the installation program **UniPrint10\_x\*\_Setup.exe** as an administrator.
2. In the **UniPrint Infinity Installation** dialog box, click **Next**.
3. In the **License Agreement** dialog box, click **I accept the terms in the license agreement** and then click **Next**.

4. In the **Destination Folder** dialog box, click **Next** to accept the default location for the UniPrint Infinity program files. Click **Change** to select a different location.



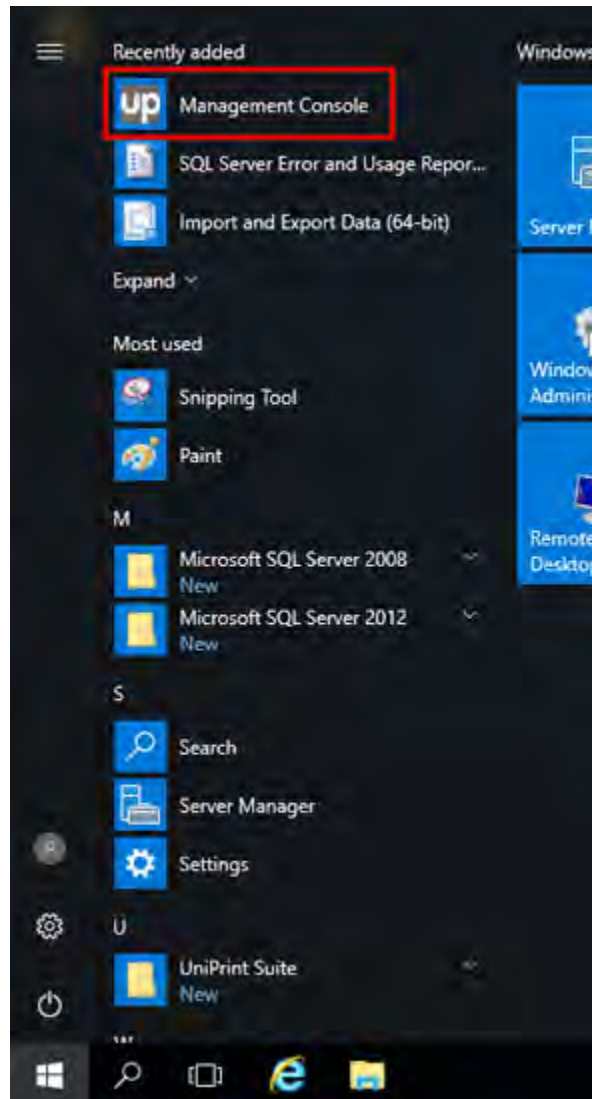
5. In the **Setup Configuration Type** dialog box, select **UniPrint Bridge** and then click **Next**. **NOTE:** By default, UniPrint Web Services will also be installed.



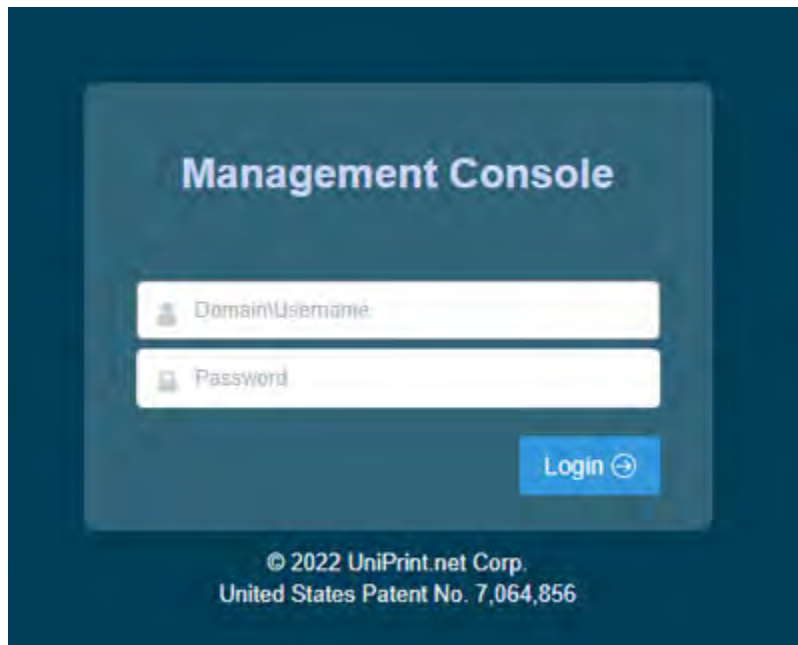
6. Some components, for example, the Management Console and SecurePrint, require SQL Server to be installed. Click **Next**.
7. In the **Ready to Install the Program** dialog box, click **Install**. The UniPrint installer will copy files to the destination folder.
8. Click **Finish** to complete the installation.



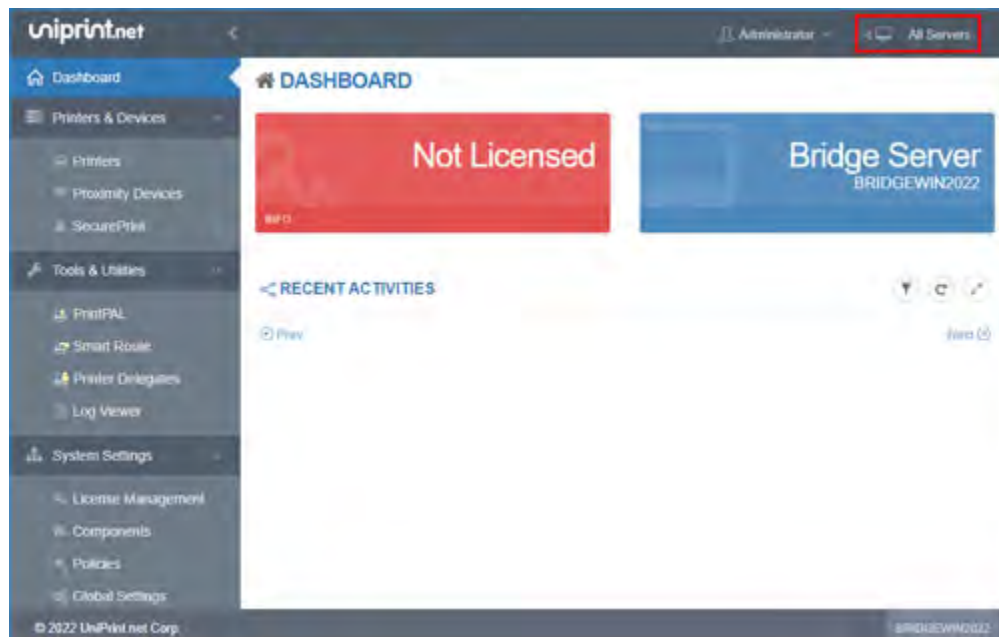
9. Click  and then under **Recently added**, click **Management Console**.



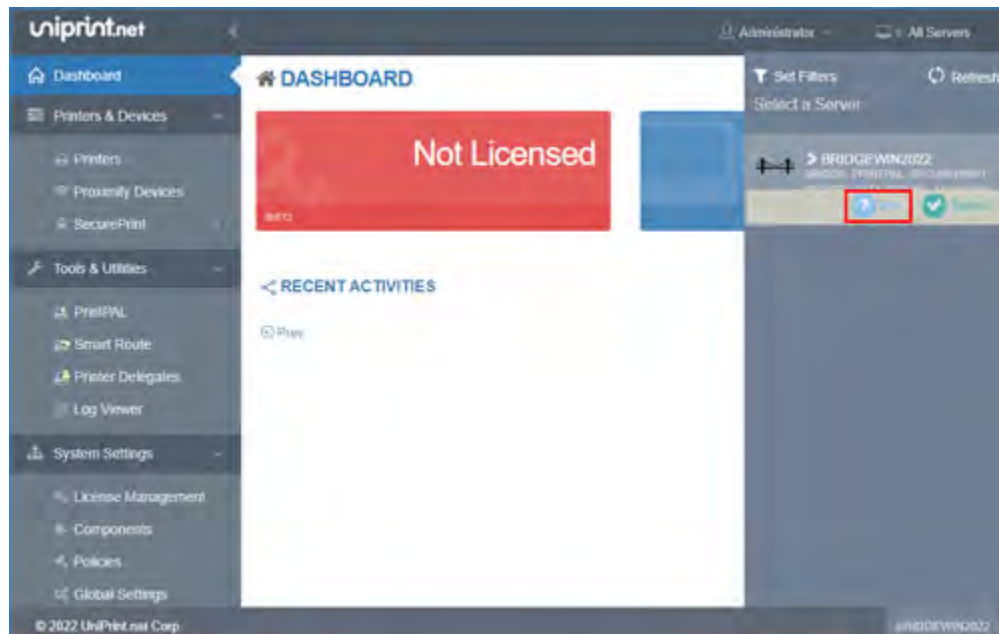
10. Enter administrative domain credentials and then click **Login**.



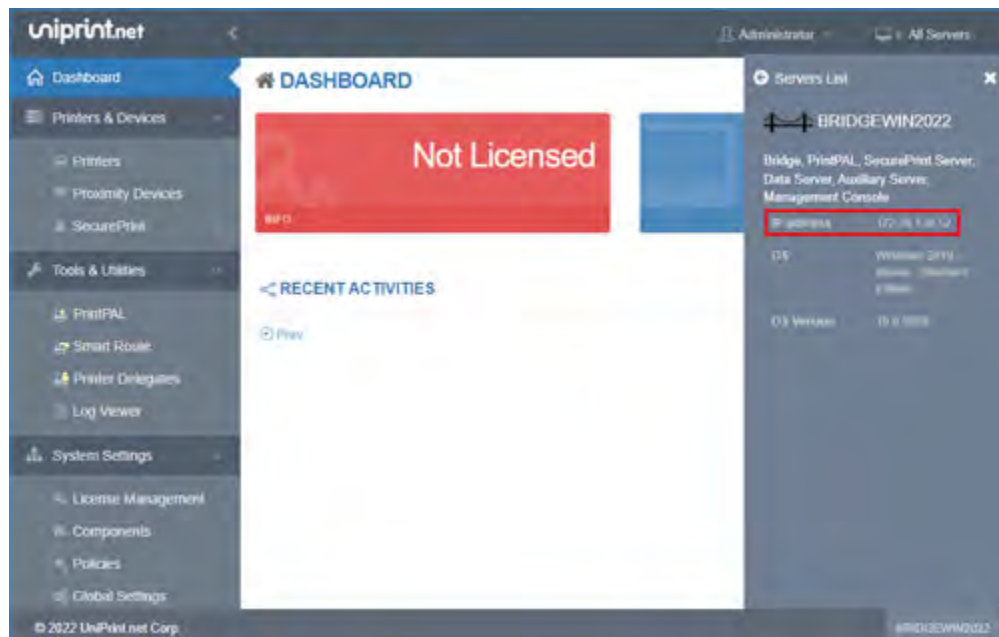
11. At the top of the console, click **All Servers**.



12. Mouse over the UniPrint Bridge and then click **Info**.



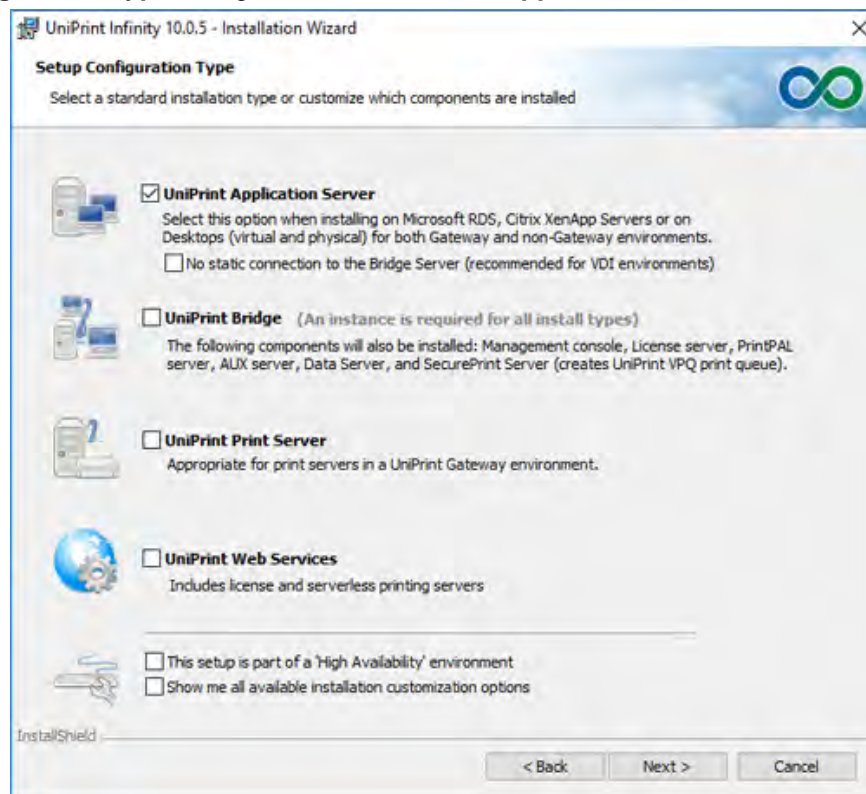
13. Take note of the IP address. This is required when installing the UniPrint Application Server.



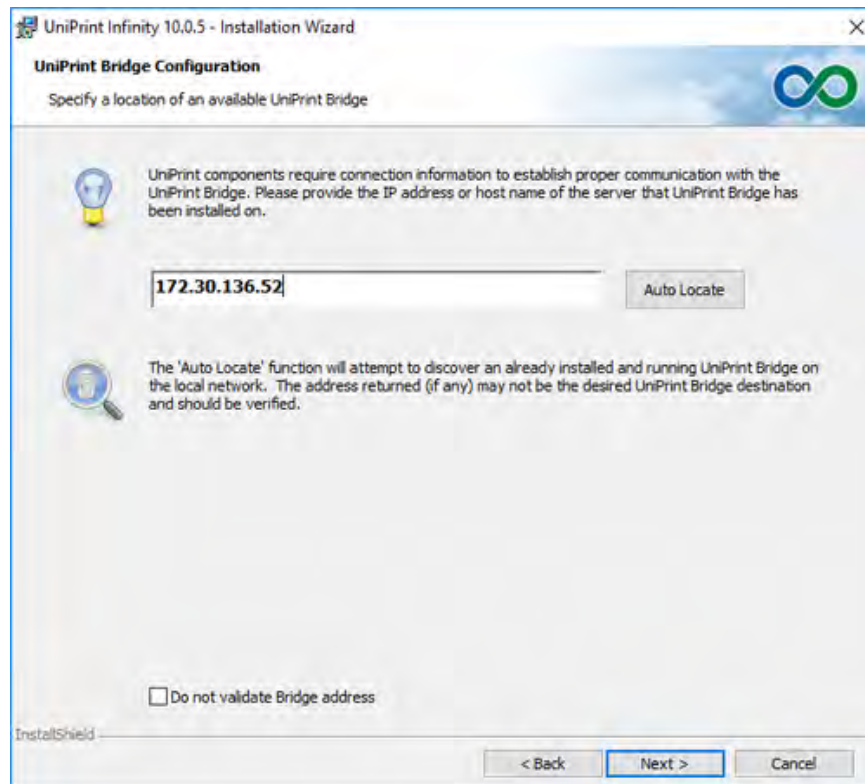
## STEP 2: Install UniPrint Application Server

1. On Server 2, run the installation program **UniPrint10\_x\*\_Setup.exe** as an administrator.
2. In the **UniPrint Infinity Installation** dialog box, click **Next**.
3. In the **License Agreement** dialog box, click **I accept the terms in the license agreement** and then click **Next**.

4. In the **Destination Folder** dialog box, click **Next** to accept the default location for the UniPrint program files. Click **Change** to select a different default location.
5. In the **Setup Configuration Type** dialog box, select **UniPrint Application Server** and then click **Next**.



6. In the **UniPrint Bridge Configuration** dialog box, enter the **IP Address** of the UniPrint Bridge and then click **Next**.



7. In the **Ready to Install the Program** dialog box, click **Install**. The UniPrint installer will copy files to the destination folder.
8. Click **Finish** to complete the installation.

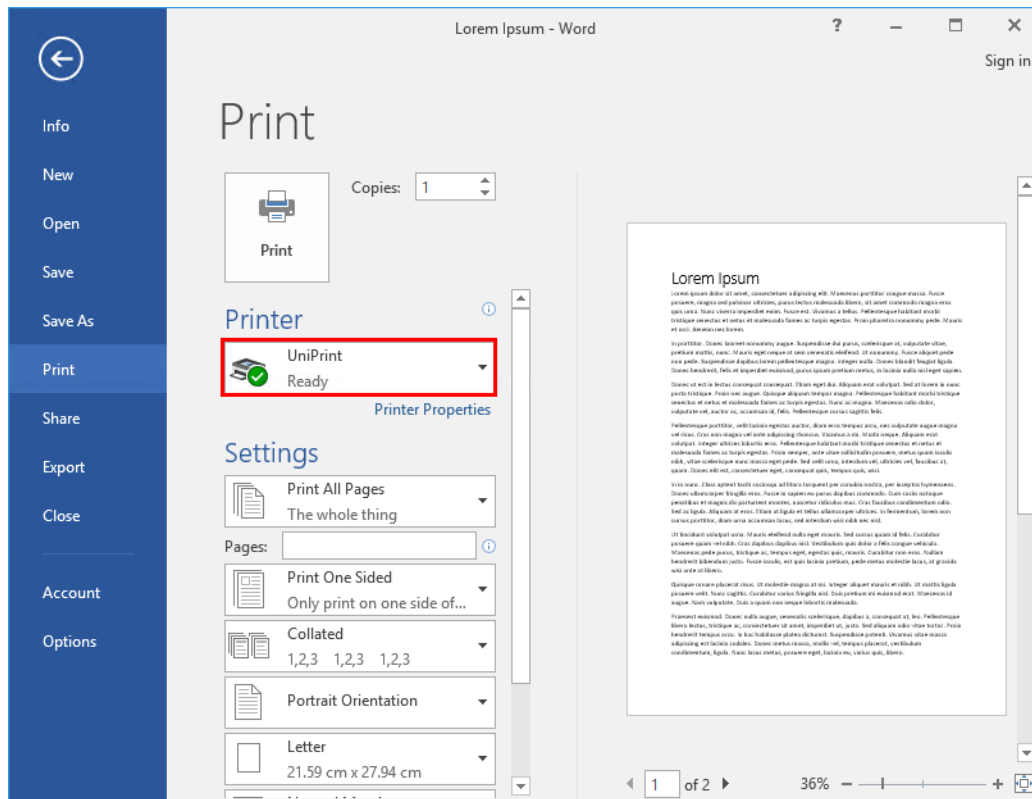
## STEP 3: Install UniPrint Client

Install UniPrint Client on the workstation. UniPrint Client can be downloaded for free from <https://www.uniprint.net/en/uniprint-client/>. Refer to the [UniPrint Client Administrator's Guide](#) for detailed installation instructions.

## Printing From An ICA/RDP Session

1. From the workstation, launch an ICA/RDP session by logging onto the application server as you normally would to access applications.
2. Open an application from which to print, for example, Microsoft Word.
3. Print from the application. For example in Microsoft Word 2016, click the **File** tab and then click **Print**.

4. Select the **UniPrint** printer and then click **Print**.



5. After 15 days from installation, the demo license will expire and any documents will be printed with a watermark printed across each page. To remove this watermark, contact [sales@processfusion.com](mailto:sales@processfusion.com) to request an extended demo license or to purchase UniPrint Infinity.

